

## VALVES FOR FLAT SURFACES - SQ SERIES - Ø 1"



### FEATURES

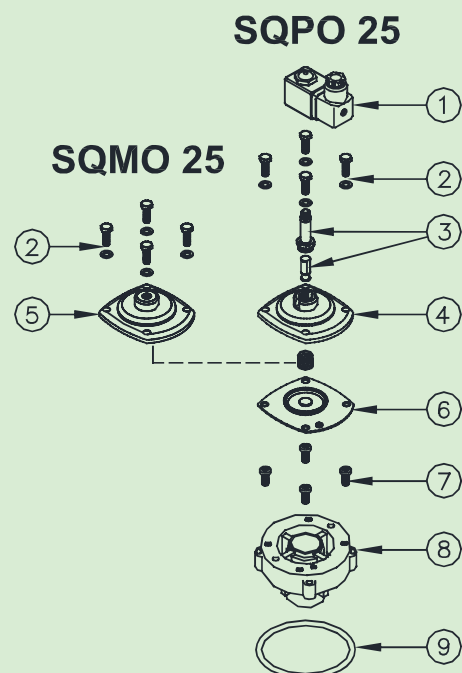
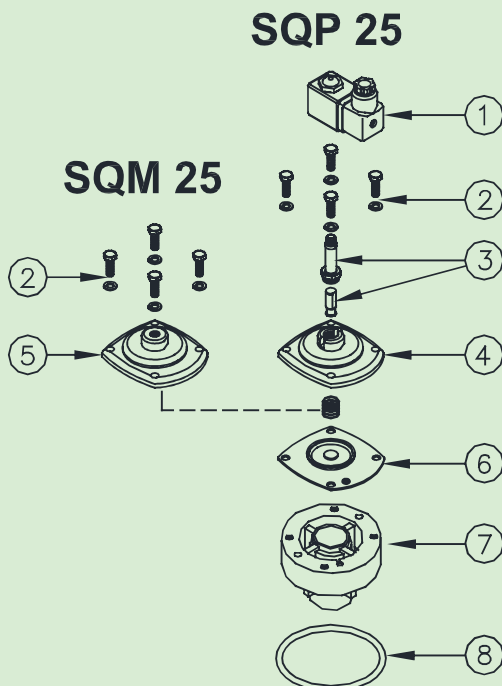
Fluids	Non-lubricated filtered air
Operating temperature	Nitrile diaphragm -20°C; +80°C Viton diaphragm -20°C; +200°C
Operating pressure	Between 0.5 and 7.5 bar
Body and cover	Die-cast aluminium
Pilot unit	Stainless steel
Screws and bolts	Stainless steel
Coil insulation	Class H
Connector	PG 9 EN175301-803
Connector + coil protection	IP65 EN60529
Standard voltage	24V/50-60Hz (±10%) 19VA 115V/50-60Hz (±10%) 19VA 230V/50-60Hz (±10%) 19VA 24VDC (± 10%) 18 Watt

DESCRIPTION	SQM25/SQP25
1 Coil + Connector	BH10...V/50-60Hz
2 Screws + Washers	VTE6x20+TROND6GROWER
3 Pilot unit	GPC10
4 Cover	TCOP25
5 Remote cover	TCOP25FM
6 Diaphragm	M25
6a Spring	TMOL10G
7 Valve body	TCOR25IM
8 O-ring	G OR65x4

SQP version with built-in pilot / SQM version with remote pilot

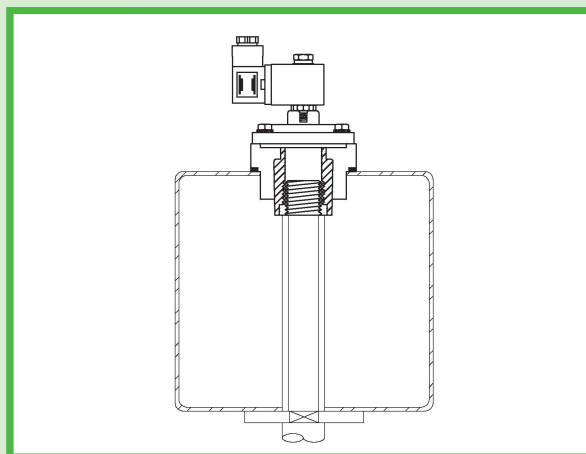
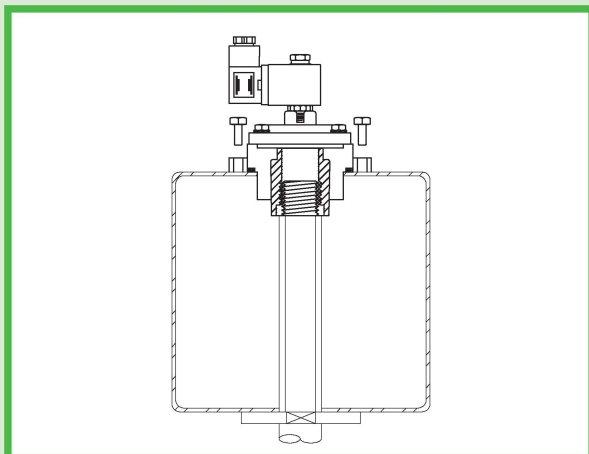
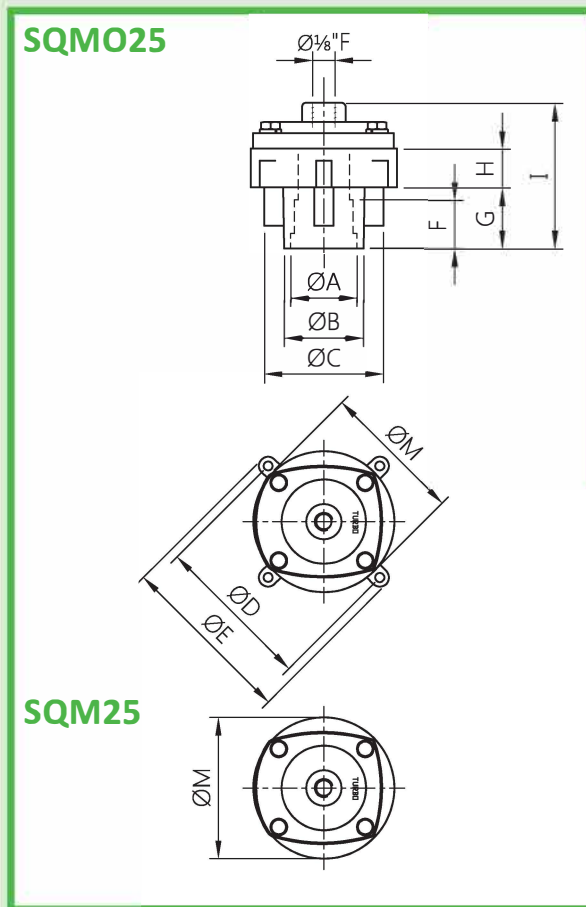
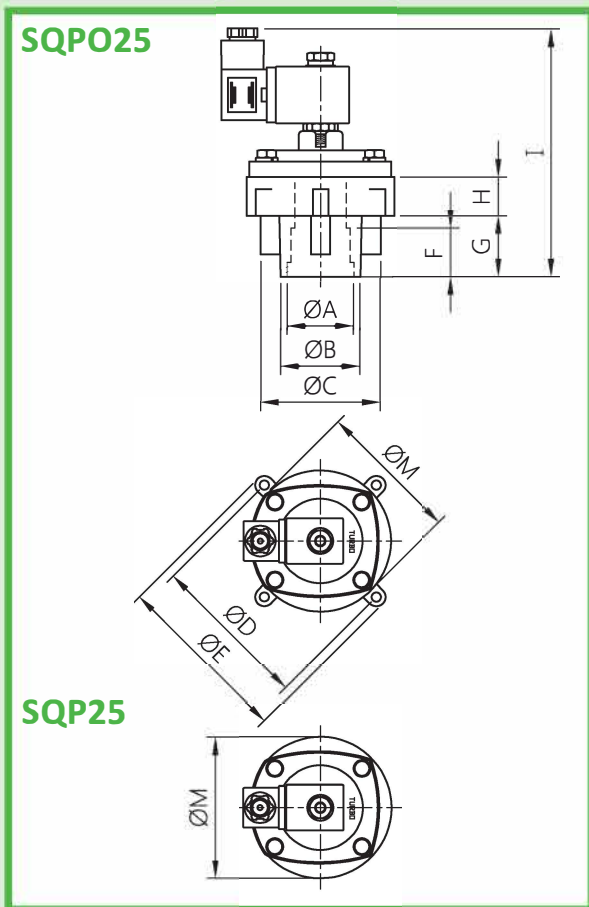
DESCRIPTION	SQMO25/SQPO25
1 Coil + Connector	BH10...V/50-60Hz
2 Screws + Washers	VTE6x20+TROND6GROWER
3 Pilot unit	GPC10
4 Cover	TCOP25
5 Remote cover	TCOP25FM
6 Diaphragm	M25
6a Spring	TMOL10G
7 Screws	VTCEI6x16
8 Valve body	TCOR25IMO
9 O-ring	G OR65x4

SQPO version with built-in pilot / SQMO version with remote pilot



# SQ SERIES - Ø 1" - OVERALL DIMENSIONS

PULSE VALVES FOR FLAT SURFACES



MODEL	ØA	ØB	ØC	ØD	ØE	ØM	F	G	H	I	L	Weight (kg)
SQPO 25	1"	41.4	62.2	104	116	92	25	31.5	20.2	136	6.2	0.7
SQP 25	1"	41.4	62.2	-	-	92	25	31.5	20.2	136	6.2	0.7
SQMO 25	1"	41.4	62.2	104	116	92	25	31.5	20.2	78	6.2	0.5
SQM 25	1"	41.4	62.2	-	-	92	25	31.5	20.2	78	6.2	0.5



## VALVES FOR FLAT SURFACES - SQ SERIES - Ø 1 1/2"

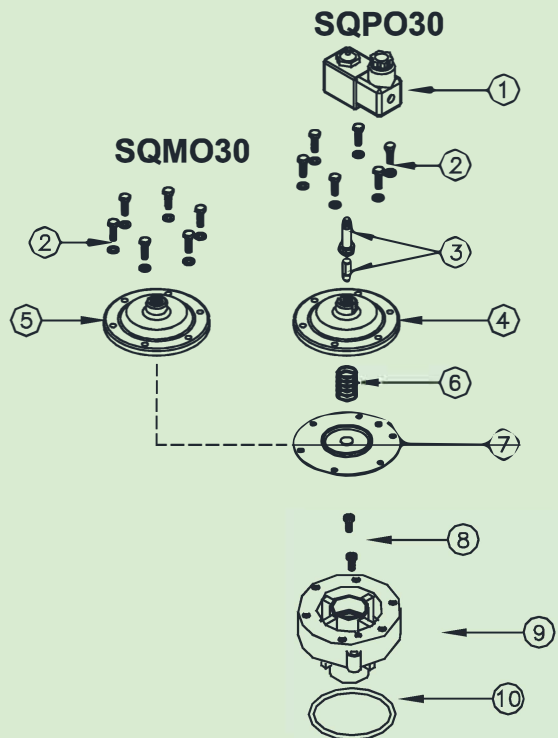
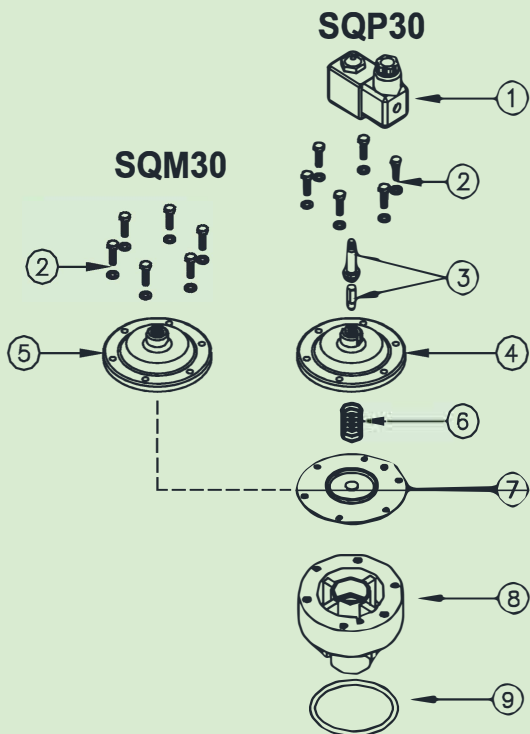


### FEATURES

Fluids	Non-lubricated filtered air
Operating temperature	Nitrile diaphragm -20°C; +80°C Viton diaphragm -20°C; +200°C
Operating pressure	Between 0.5 and 7.5 bar
Body and cover	Die-cast aluminium
Pilot unit	Stainless steel
Screws and bolts	Stainless steel
Coil insulation	Class H
Connector	PG 9 EN175301-803
Connector + coil protection	IP65 EN60529
Standard voltage	24V/50-60Hz (±10%) 19VA 115V/50-60Hz (±10%) 19VA 230V/50-60Hz (±10%) 19VA 24VDC (± 10%) 18 Watt

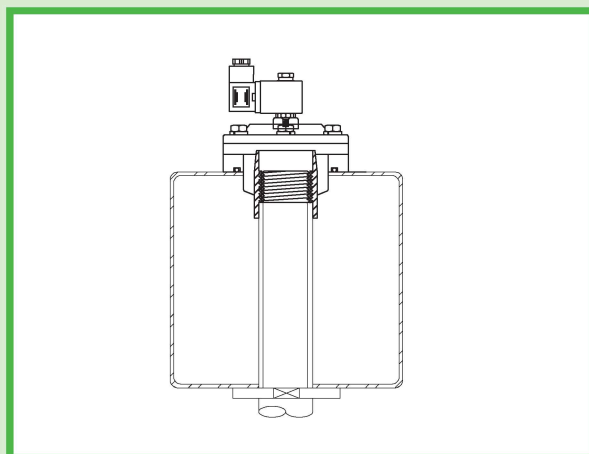
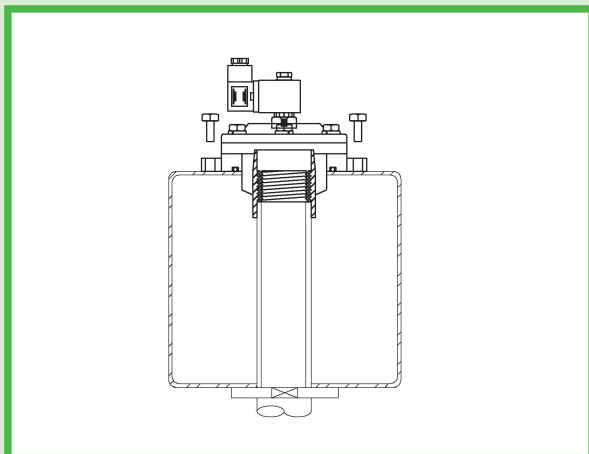
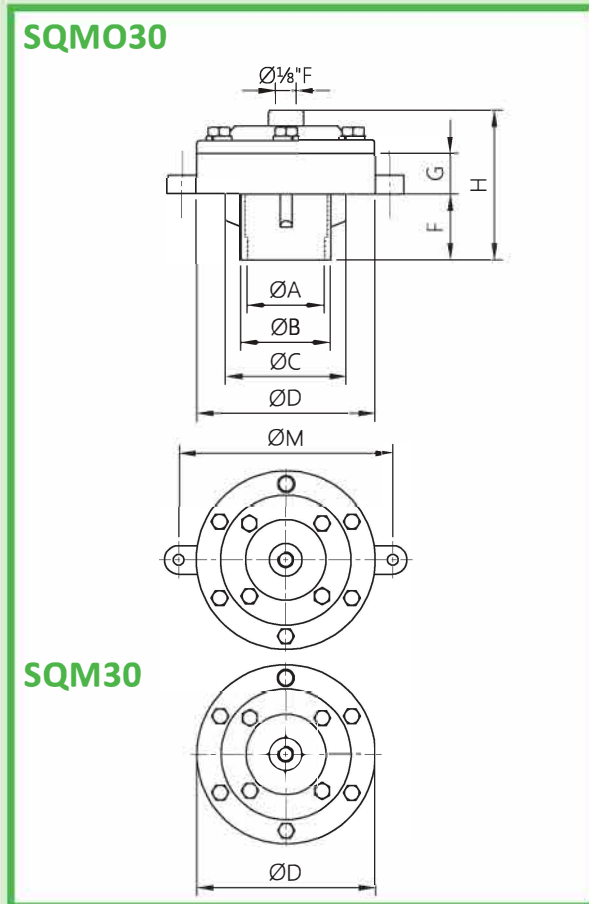
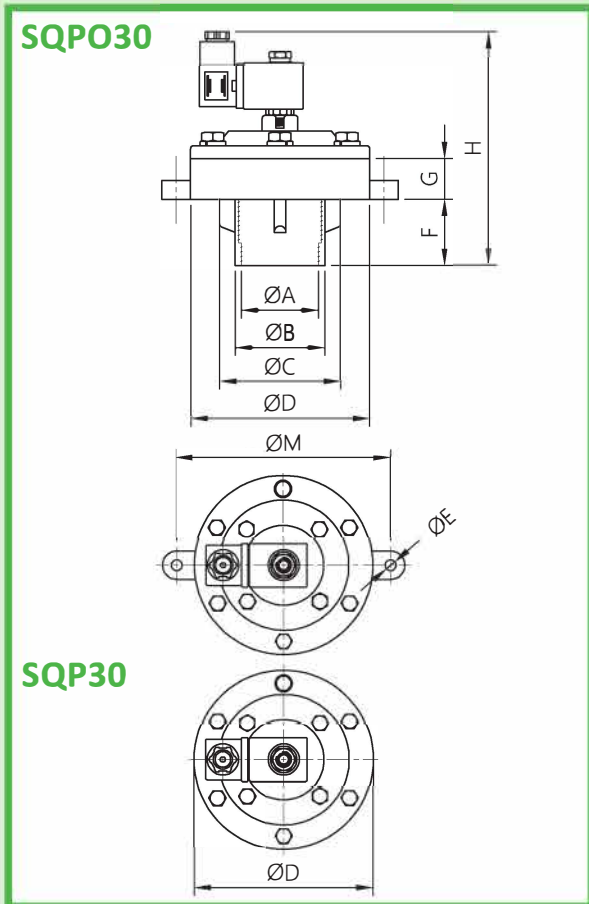
DESCRIPTION	SQM30/SQP30
1 Coil + Connector	BH10...V/50-60Hz
2 Screws + Washers	VTE6x20+TROND6GROWER
3 Pilot unit	GPC10
4 Cover	TCOP30
5 Remote cover	TCOP30FM
6 Spring	TMOL25GHS
7 Diaphragm	M30
8 Valve body	TCOR35FMG
9 O-ring	GOR6337

DESCRIPTION	SQMO30/SQPO30
1 Coil + Connector	BH10...V/50-60Hz
2 Screws + Washers	VTE6x20+TROND6GROWER
3 Pilot unit	GPC10
4 Cover	TCOP30
5 Remote cover	TCOP30FM
6 Spring	TMOL25GHS
7 Diaphragm	M30
8 Screws	VTCEI8X20
9 Valve body	TCOR35FMGS
10 O-ring	GOR6337



# SQ SERIES - Ø 1 ½" - OVERALL DIMENSIONS

PULSE VALVES FOR FLAT SURFACES



MODEL	ØA	ØB	ØC	ØD	ØE	F	G	H	M	Weight (kg)
SQP 30	1 ½"	57	80.5	114	9	42	26	158	-	1.4
SQPO 30	1 ½"	57	80.5	114	9	42	26	158	130	1.4
SQM 30	1 ½"	57	80.5	114	9	42	26	125	-	1.2
SQMO 30	1 ½"	57	80.5	114	9	42	26	125	130	1.2



## VALVES FOR FLAT SURFACES - SQ SERIES - Ø 1 1/2"

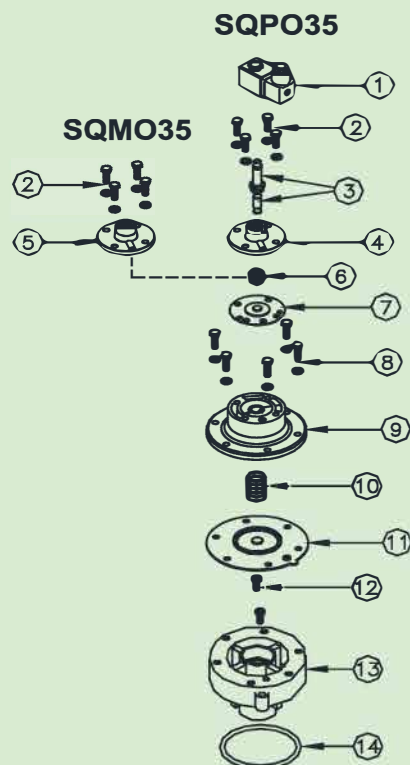
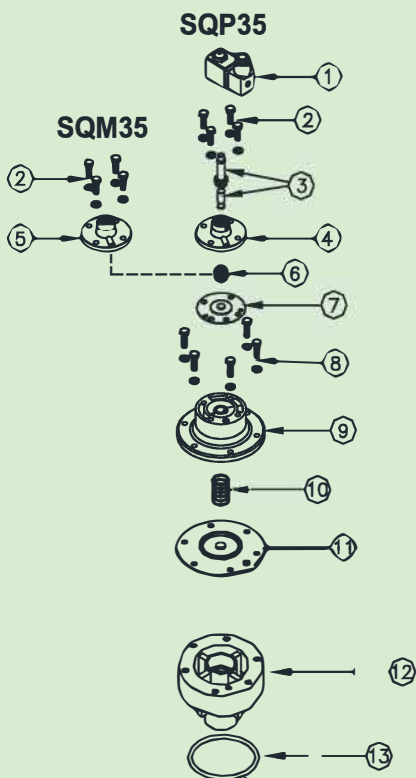


### FEATURES

Fluids	Non-lubricated filtered air
Operating temperature	Nitrile diaphragm -20°C +80°C Viton diaphragm -20°C +200°C
Operating pressure	Between 0.5 and 7.5 bar
Body and cover	Die-cast aluminium
Pilot unit	Stainless steel
Screws and bolts	Stainless steel
Coil insulation	Class H
Connector	PG 9 EN175301-803
Connector + coil protection	IP65 EN60529
Standard voltage	24V/50-60Hz (±10%) 19VA 115V/50-60Hz (±10%) 19VA 230V/50-60Hz (±10%) 19VA 24VDC (± 10%) 18 Watt

DESCRIPTION	SQM35/SQP35
1 Coil + Connector	BH10...V/50-60Hz
2 Screws + Washers	VTE6x18+TROND6GROWER
3 Pilot unit	GPC10
4 Cover	TCOP10
5 Remote cover	TCOP10FM
6 Spring	TMOL11G
7 Secondary diaphragm	M10
8 Screws + Washers	VTE6x20+TROND6GROWER
9 Cover	TCOP35N
10 Spring	TMOL25GHS
11 Primary diaphragm	M35
12 Valve body	TCOR35FMG
13 O-ring	G OR6337

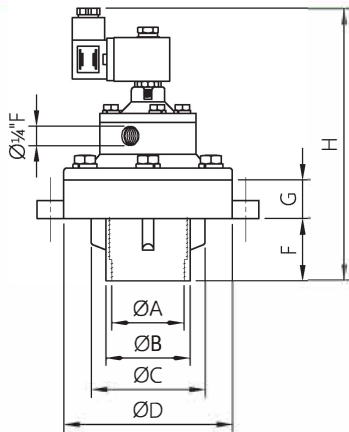
DESCRIPTION	SQMO35/SQPO35
1 Coil + Connector	BH10...V/50-60Hz
2 Screws + Washers	VTE6x18+TROND6GROWER
3 Pilot unit	GPC10
4 Cover	TCOP10
5 Remote cover	TCOP10FM
6 Spring	TMOL11G
7 Secondary diaphragm	M10
8 Screws + Washers	VTE6x20+TROND6GROWER
9 Cover	TCOP35N
10 Spring	TMOL25GHS
11 Primary diaphragm	M35
12 Screws	VTCEI8x20
13 Valve body	TCOR35FMGS
14 O-ring	GOR6337



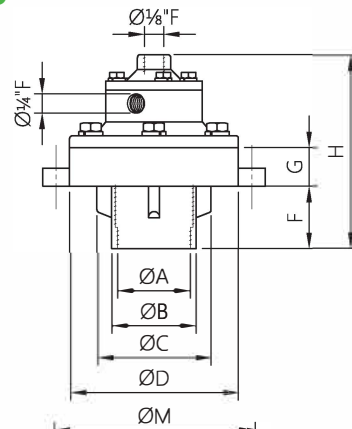
# SQ SERIES - $\varnothing 1 \frac{1}{2}$ " - OVERALL DIMENSIONS

PULSE VALVES FOR FLAT SURFACES

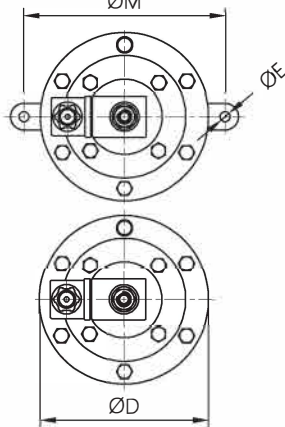
SQP035



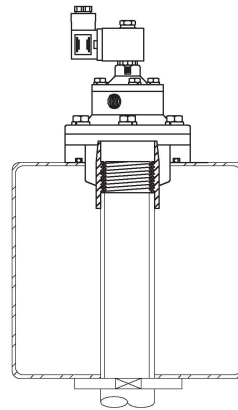
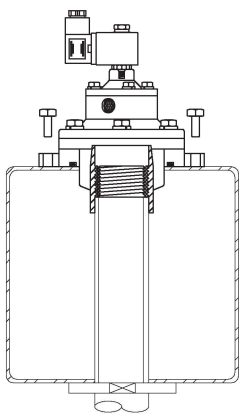
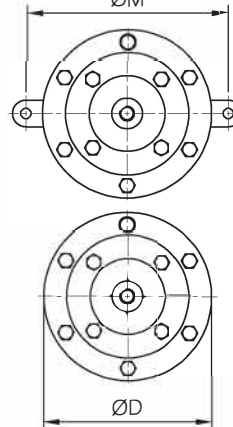
SQMO35



SQP35



SQM35



MODEL	$\varnothing A$	$\varnothing B$	$\varnothing C$	$\varnothing D$	$\varnothing E$	F	G	H	M	Weight (kg)
SQP 35	1 1/2"	57	80.5	114	9	42	26	190	-	1.6
SQPO 35	1 1/2"	57	80.5	114	9	42	26	190	130	1.6
SQM 35	1 1/2"	57	80.5	114	9	42	26	135	-	1.4
SQMO 35	1 1/2"	57	80.5	114	9	42	26	135	130	1.4





## VALVES FOR FLAT SURFACES - SQ SERIES - Ø 2" - 2½" - 3" - 4"



### FEATURES

Fluids	Non-lubricated filtered air
Operating temperature	Nitrile diaphragm -20°C; +80°C Viton diaphragm -20°C; +200°C
Operating pressure	Between 0.5 and 7.5 bar
Body and cover	Die-cast aluminium
Pilot unit	Stainless steel
Screws and bolts	Stainless steel
Coil insulation	Class H
Connector	PG 9 EN175301-803
Connector + coil protection	IP65 EN60529
Standard voltage	24V/50-60Hz (±10%) 19VA 115V/50-60Hz (±10%) 19VA 230V/50-60Hz (±10%) 19VA 24VDC (± 10%) 18 Watt

DESCRIPTION	SQM50/SQP50
1 Coil + Connector	BH10...V/50-60Hz
2 Screws + Washers	VTE6x20+TROND6GROWER
3 Pilot unit	GPC10
4 Cover	TCOP25
5 Remote cover	TCOP25FM
6 Secondary diaphragm	M25
6a Spring	TMOL10G
7 Screws + Washers	VTE10x25+TROND10GROWER
8 Cover	TCOP50G
9 Spring	TMOL40
10 Primary diaphragm	M50
11 Valve body	TCOR50FG
12 O-ring	G OR133,35x5,3

SQP version with built-in pilot  
SQM version with remote pilot

DESCRIPTION	SQM75IN/SQP75IN
1 Coil + Connector	BH10...V/50-60Hz
2 Screws + Washers	VTE6x20+TROND6GROWER
3 Pilot unit	GPC10
4 Cover	TCOP25
5 Remote cover	TCOP25FM
6 Secondary diaphragm	M25
6a Spring	TMOL10G
7 Screws + Washers	VTE10x25+TROND10GROWER
8 Cover	TCOP65G
9 Spring	TMOL40
10 Primary diaphragm	M76
11 Valve body	TCOR75FLQ
12 O-ring	G OR177,17x6,99

SQP version with built-in pilot  
SQM version with remote pilot

DESCRIPTION	SQM65IN/SQP65IN
1 Coil + Connector	BH10...V/50-60Hz
2 Screws + Washers	VTE6x20+TROND6GROWER
3 Pilot unit	GPC10
4 Cover	TCOP25
5 Remote cover	TCOP25FM
6 Secondary diaphragm	M25
6a Spring	TMOL10G
7 Screws + Washers	VTE10x25+TROND10GROWER
8 Cover	TCOP65G
9 Spring	TMOL40
10 Primary diaphragm	M55/LP
11 Valve body	TCOR65FLQ
12 O-ring	G OR177,17x6,99

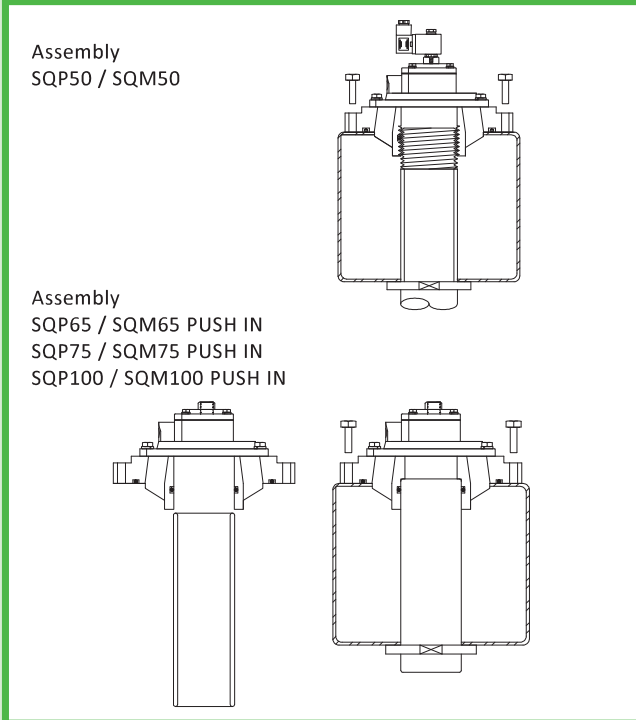
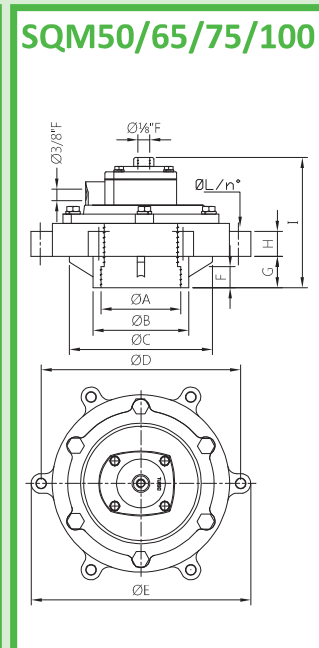
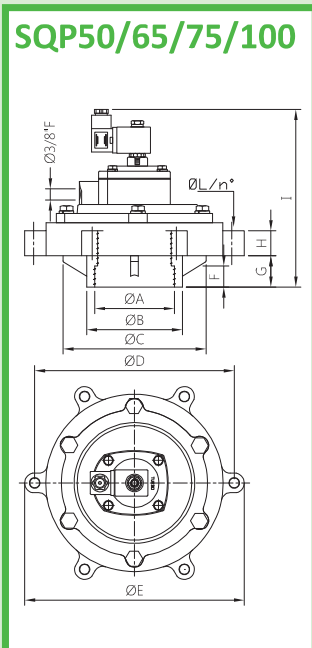
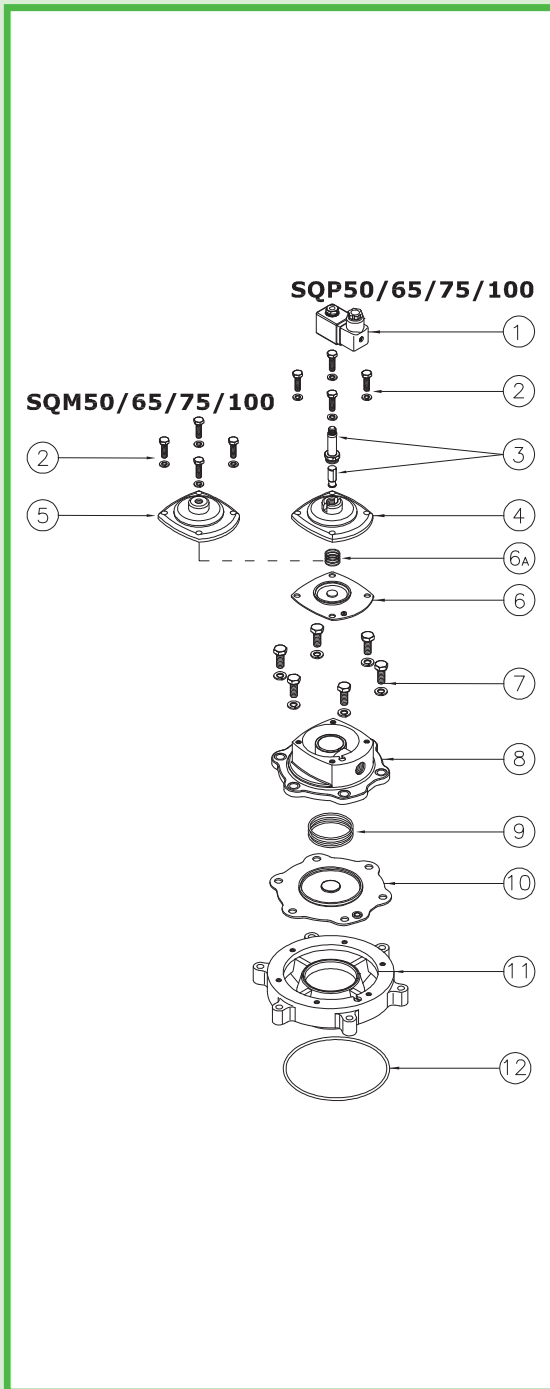
SQP version with built-in pilot  
SQM version with remote pilot

DESCRIPTION	SQM100IN/SQP100IN
1 Coil + Connector	BH10...V/50-60Hz
2 Screws + Washers	VTE6x20+TROND6GROWER
3 Pilot unit	GPC10
4 Cover	TCOP25
5 Remote cover	TCOP25FM
6 Secondary diaphragm	M25/BW
6a Spring	TMOL10G
7 Screws + Washers	VTE10x25+TROND10GROWER
8 Cover	TCOP65G
9 Spring	TMOL40
10 Primary diaphragm	M76-N04
11 Valve body	TCOR100FLQ
12 O-ring	G OR177,17x6,99

SQP version with built-in pilot  
SQM version with remote pilot

# SQ SERIES - Ø 2" - 2½" - 3" - 4" - OVERALL DIMENSIONS

PULSE VALVES FOR FLAT SURFACES



MODEL	ØA	ØB	ØC	ØD	ØE	F	G	H	I	L	Weight (kg)
SQP 50	2"	83	126	175	195	39	60	20	211	11	2.4
SQP 65IN	2 ½"	107.5	161	225	247	44	35.5	27	205	11	3.9
SQP 75IN	3"	107.5	161	225	247	50	35.5	27	205	11	3.7
SQP 100IN	4"	119.5	161	225	247	44	35.5	27	205	11	3.8
SQM 50	2"	83	126	175	195	39	60	20	153	11	2.2
SQM 65IN	2 ½"	107.5	161	225	247	44	35.5	27	147	11	3.7
SQM 75IN	3"	107.5	161	225	247	50	35.5	27	147	11	3.5
SQM 100IN	4"	119.5	161	225	247	44	35.5	27	148	11	3.6

