

VALVES WITH THREADED CONNECTIONS - F SERIES - Ø 3/4" - 1" - 1 1/2" - 2" - 2 1/2"

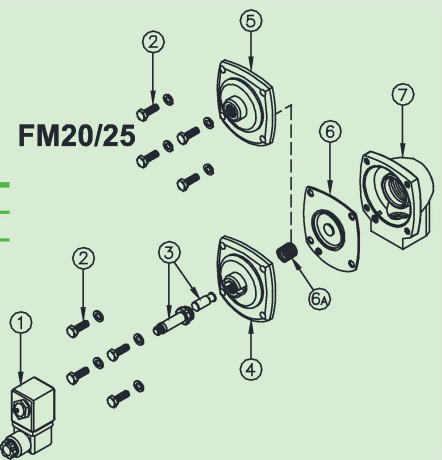


FEATURES

Fluids	Non-lubricated filtered air
Operating temperature	Nitrile diaphragm -20°C; +80°C Viton diaphragm -20°C; +200°C
Operating pressure	Between 0.5 and 7.5 bar
Body and cover	Die-cast aluminium
Pilot unit	Stainless steel
Screws and bolts	Stainless steel
Coil insulation	Class H
Connector	PG 9 EN175301-803
Connector + coil protection	IP65 EN60529
Standard voltage	24V/50-60Hz (±10%) 19VA 115V/50-60Hz (±10%) 19VA 230V/50-60Hz (±10%) 19VA 24VDC (± 10%) 18 Watt

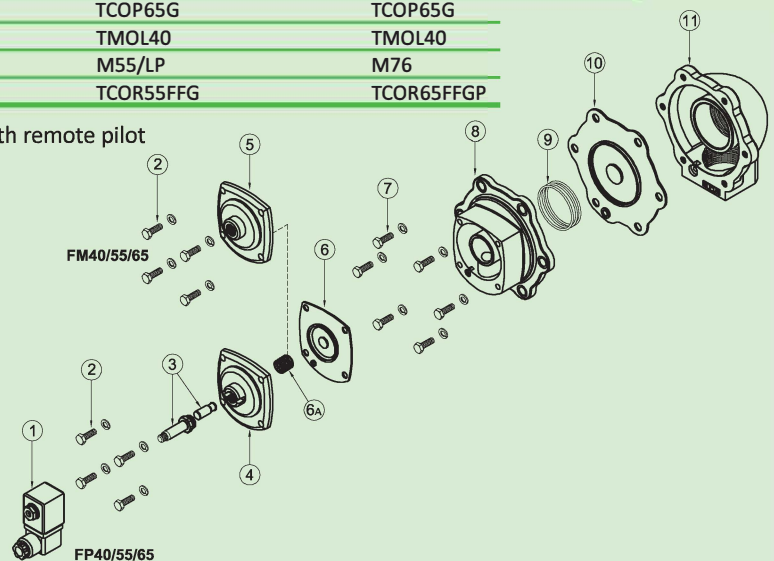
DESCRIPTION	FM20/FP20	FM25/FP25
1 Coil + Connector	BH10...V/50-60Hz	BH10...V/50-60Hz
2 Screws + Washers	VTE6x20+TROND6GROWER	VTE6x20+TROND6GROWER
3 Pilot unit	GPC10	GPC10
4 Cover	TCOP25	TCOP25
5 Remote cover	TCOP25FM	TCOP25FM
6 Diaphragm	M25	M25
6a Spring	TMOL10G	TMOL10G
7 Valve body	TCOR20FFG	TCOR25FFG

FP version with built-in pilot / FM version with remote pilot



DESCRIPTION	FM40/FP40	FM55/FP55	FM65/FP65
1 Coil + Connector	BH10...V/50-60Hz	BH10...V/50-60Hz	BH10...V/50-60Hz
2 Screws + Washers	VTE6x20+TROND6GROWER	VTE6x20+TROND6GROWER	VTE6x20+TROND6GROWER
3 Pilot unit	GPC10	GPC10	GPC10
4 Cover	TCOP25	TCOP25	TCOP25
5 Remote cover	TCOP25FM	TCOP25FM	TCOP25FM
6 Secondary diaphragm	M25	M25	M25
6a Spring	TMOL10G	TMOL10G	TMOL10G
7 Screws + Washers	VTE8x20+TROND8GROWER	VTE10x25+TROND8GROWER	VTE10x25+TROND8GROWER
8 Cover	TCOP40N	TCOP65G	TCOP65G
9 Spring	TMOL40	TMOL40	TMOL40
10 Primary diaphragm	M40	M55/LP	M76
11 Valve body	TCOR40FFG	TCOR55FFG	TCOR65FFGP

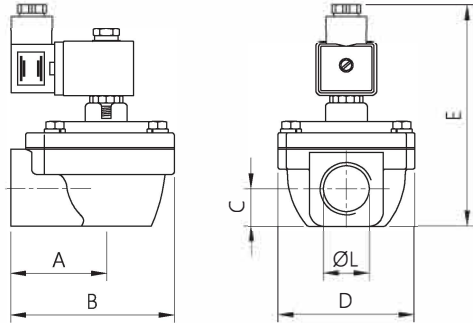
FP version with built-in pilot / FM version with remote pilot



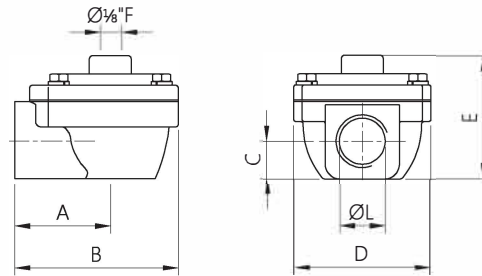
F SERIES- $\text{\O} \frac{3}{4}$ "-1"-1 $\frac{1}{2}$ "-2"-2 $\frac{1}{2}$ " - OVERALL DIMENSIONS

PULSE VALVES WITH THREADED CONNECTIONS

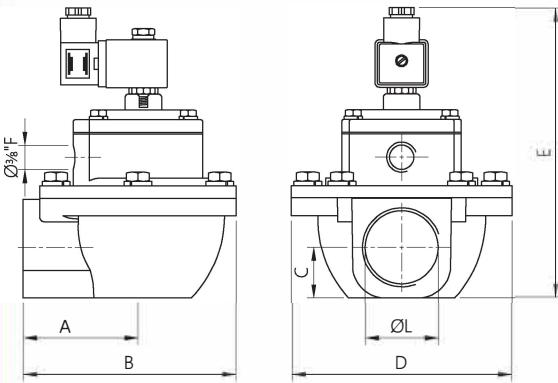
FP20 - FP25



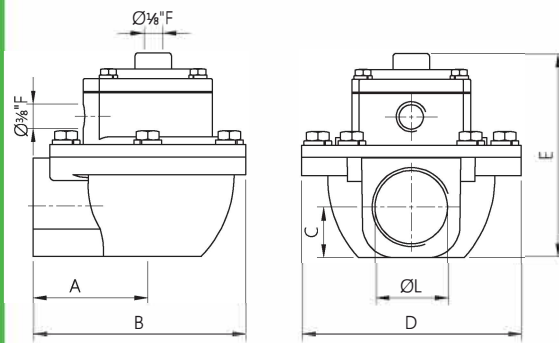
FM20 - FM25



FP40 - FP55 - FP65



FM40 - FM55 - FM65



MODEL	$\text{\O} L$ (nom)	A	B	C	D	E	Weight (kg)
FP 20	$\frac{3}{4}$ "	52	90	20.5	74	~125	0.6
FP 25	1"	52	90	20.5	74	~125	0.5
FP 40	1 $\frac{1}{2}$ "	71.3	135	31	140	~188	1.6
FP 55	2"	114	203	40	194	~225	3.7
FP 65	2 $\frac{1}{2}$ "	114	203	48	194	~225	3.6
FM 20	$\frac{3}{4}$ "	52	90	20.5	74	~67	0.4
FM 25	1"	52	90	20.5	74	~67	0.3
FM 40	1 $\frac{1}{2}$ "	71.3	135	31	140	~130	1.4
FM 55	2"	114	203	40	194	~167	3.5
FM 65	2 $\frac{1}{2}$ "	114	203	48	194	~167	3.4

Note: NPT threads also available.

Please contact our technical department for further information



VALVES WITH THREADED CONNECTIONS - F SERIES - Ø 1 1/2"



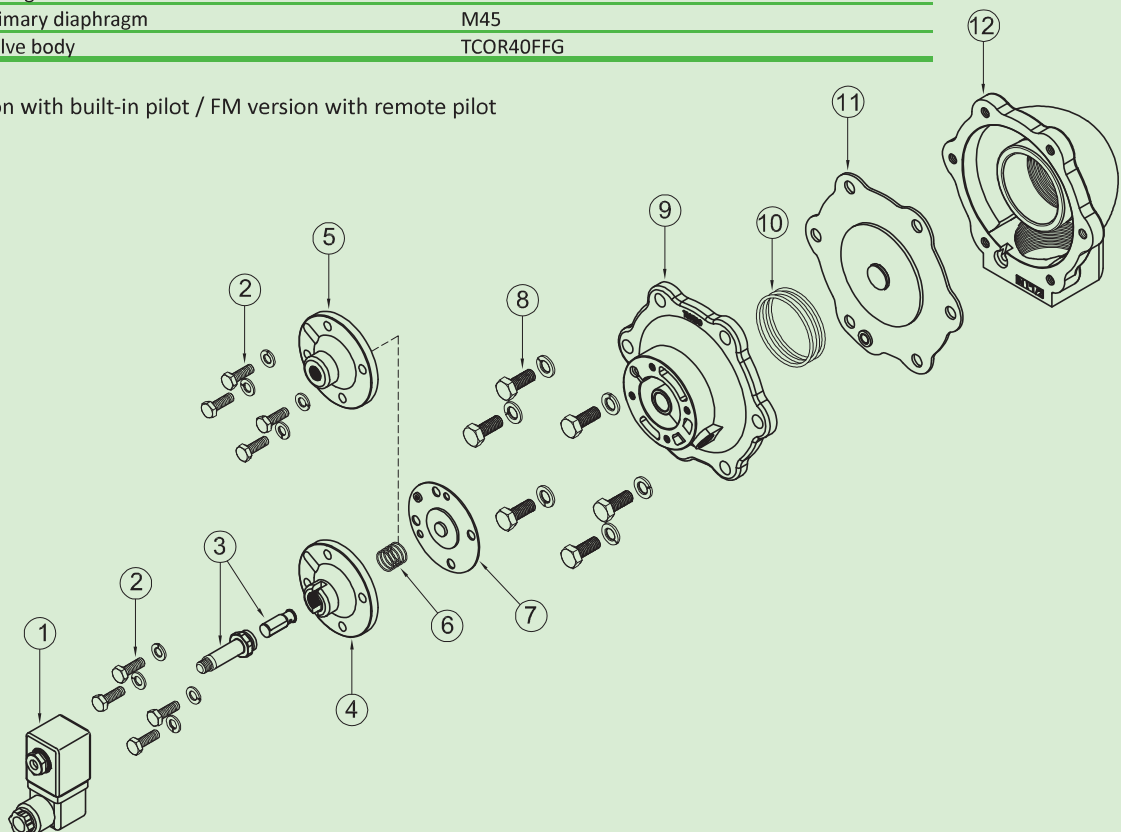
FEATURES

Fluids	Non-lubricated filtered air
Operating temperature	Nitrile diaphragm -20°C; +80°C Viton diaphragm -20°C; +200°C
Operating pressure	Between 0.5 and 7.5 bar
Body and cover	Die-cast aluminium
Pilot unit	Stainless steel
Screws and bolts	Stainless steel
Coil insulation	Class H
Connector	PG 9 EN175301-803
Connector + coil protection	IP65 EN60529
Standard voltage	24V/50-60Hz (±10%) 19VA 115V/50-60Hz (±10%) 19VA 230V/50-60Hz (±10%) 19VA 24VDC (± 10%) 18 Watt

DESCRIPTION

	FM45/FP45	
1	Coil + Connector	BH10...V/50-60Hz
2	Screws + Washers	VTE6x18+TROND6GROWER
3	Pilot unit	GPC10
4	Cover	TCOP10
5	Remote cover	TCOP10FM
6	Spring	TMOL11G
7	Secondary diaphragm	M10
8	Screws + Washers	VTE8x20+TROND8GROWER
9	Cover	TCOP45N
10	Spring	TMOL40
11	Primary diaphragm	M45
12	Valve body	TCOR40FFG

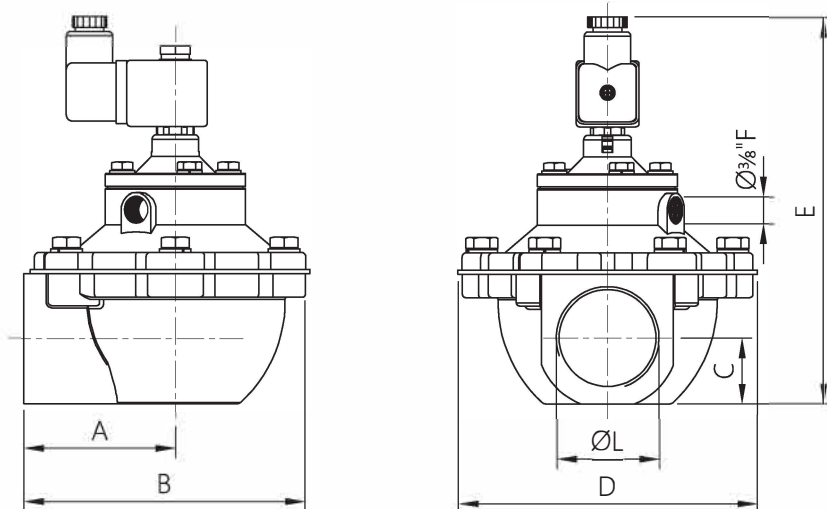
FP version with built-in pilot / FM version with remote pilot



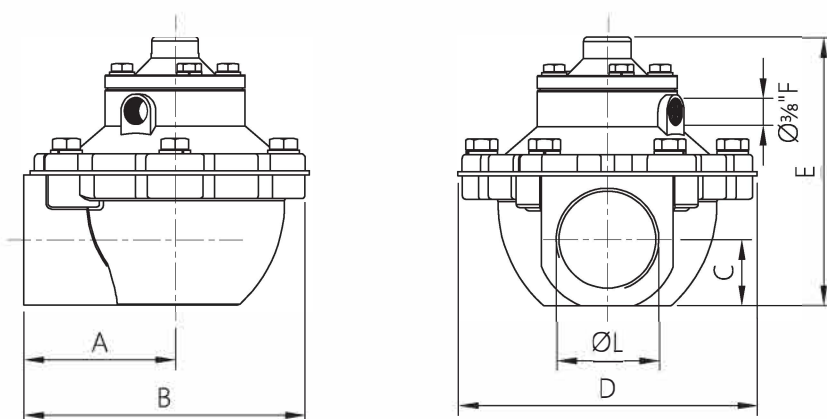
F SERIES - $\varnothing 1 \frac{1}{2}$ " - OVERALL DIMENSIONS

PULSE VALVES WITH THREADED CONNECTIONS

FP45



FM45



MODEL	$\varnothing L$ (nom)	A	B	C	D	E	Weight (kg)
FP 45	1 1/2"	71.3	135	31	140	~188	1.6
FM 45	1 1/2"	71.3	135	31	140	~122	1.4



VALVES WITH THREADED CONNECTIONS - F SERIES - Ø 3"



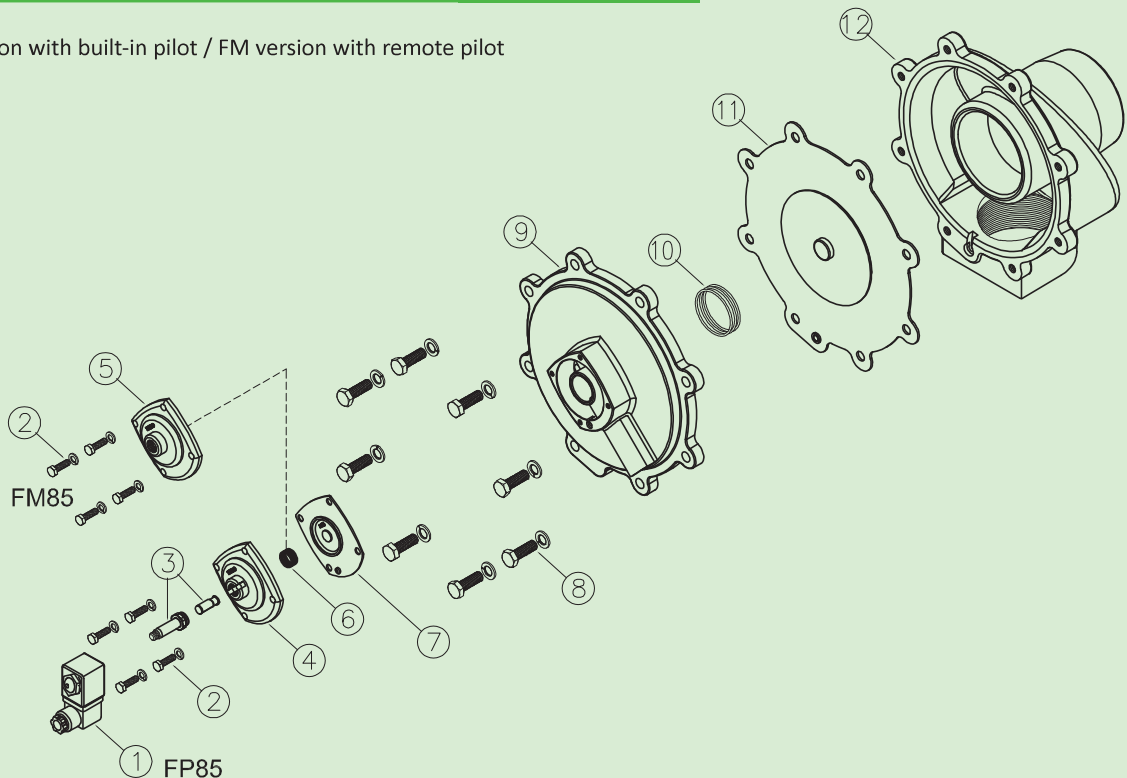
FEATURES

Fluids	Non-lubricated filtered air
Operating temperature	Nitrile diaphragm -20°C; +80°C Viton diaphragm -20°C; +200°C
Operating pressure	Between 0.5 and 7.5 bar
Body and cover	Die-cast aluminium
Pilot unit	Stainless steel
Screws and bolts	Stainless steel
Coil insulation	Class H
Connector	PG 9 EN175301-803
Connector + coil protection	IP65 EN60529
Standard voltage	24V/50-60Hz (±10%) 19VA 115V/50-60Hz (±10%) 19VA 230V/50-60Hz (±10%) 19VA 24VDC (± 10%) 18 Watt

DESCRIPTION

DESCRIPTION	FM85/FP85
1 Coil + Connector	BH10...V/50-60Hz
2 Screws + Washers	VTE6x20+TROND6GROWER
3 Pilot unit	GPC10
4 Cover	TCOP25
5 Remote cover	TCOP25FM
6 Spring	TMOL10G
7 Secondary diaphragm	M25
8 Screws + Washers	VTE10x30+TROND10GROWER
9 Cover	TCOP85
10 Spring	TMOL40
11 Primary diaphragm	M85
12 Valve body	TCOR85FFG

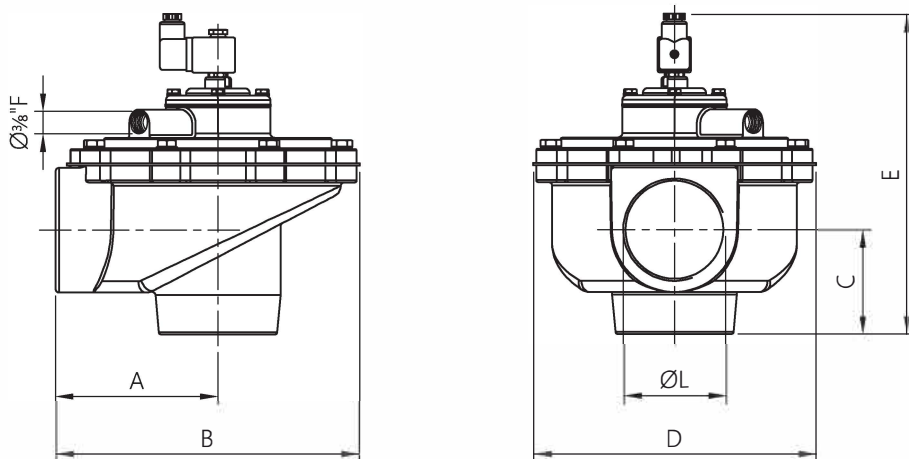
FP version with built-in pilot / FM version with remote pilot



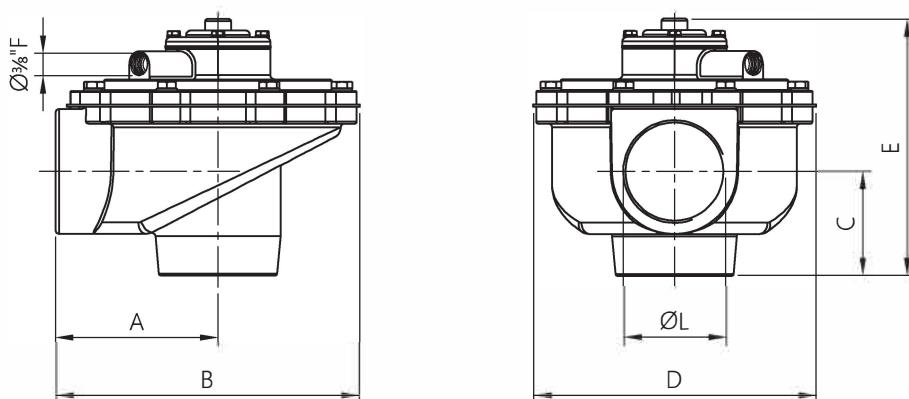
F SERIES - Ø 3" - OVERALL DIMENSIONS

PULSE VALVES WITH THREADED CONNECTIONS

FP85



FM85



MODEL	Ø L (nom)	A	B	C	D	E	Weight (kg)
FP 85	3"	143	267	92	250	~282	7.3
FM 85	3"	143	267	92	250	~227	7.1

