

STRAIGHT THROUGH VALVES - FD SERIES - Ø 1"

Patented



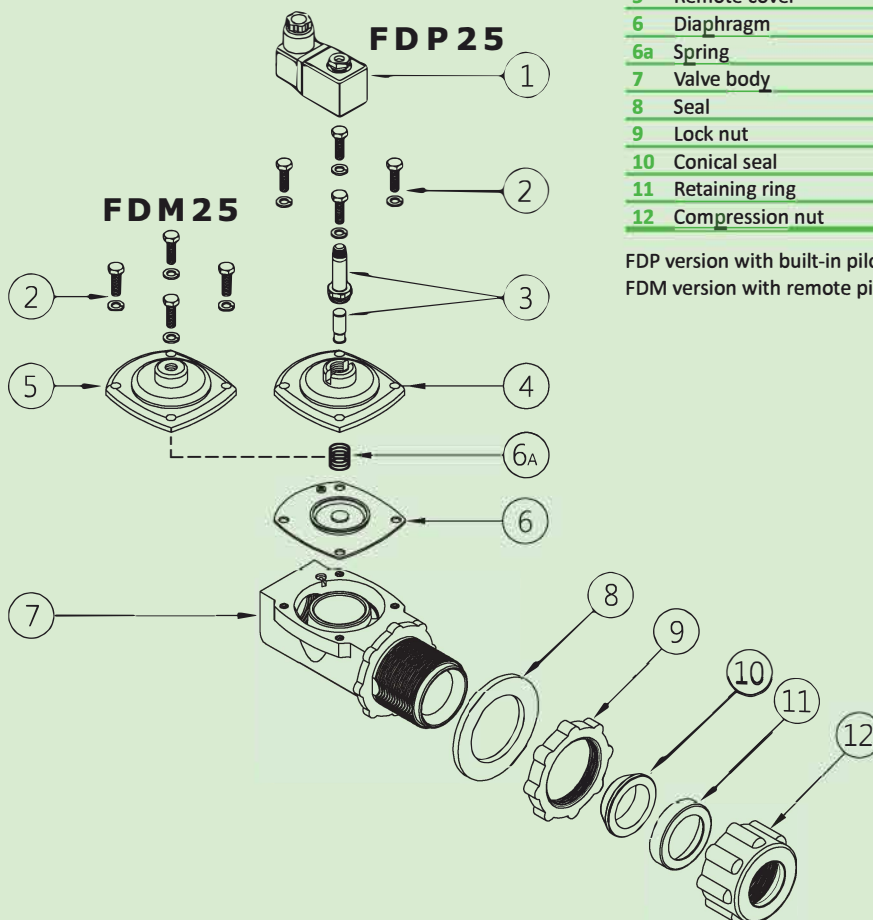
FEATURES

Fluids	Non-lubricated filtered air
Operating temperature	Nitrile diaphragm -20°C; +80°C Viton diaphragm -20°C; +200°C
Operating pressure	Between 0.5 and 7.5 bar
Body and cover	Die-cast aluminium
Pilot unit	Stainless steel
Screws and bolts	Stainless steel
Coil insulation	Class H
Connector	PG 9 EN175301-803
Connector + coil protection	IP65 EN60529
Standard voltage	24V/50-60Hz (±10%) 19VA 115V/50-60Hz (±10%) 19VA 230V/50-60Hz (±10%) 19VA 24VDC (± 10%) 18 Watt

DESCRIPTION

	FDM25/FDP25
1	Coil + Connector BH10...V/50-60Hz
2	Screws + Washers VTE6x20+TROND6GROWER
3	Pilot unit GPC10
4	Cover TCOP25
5	Remote cover TCOP25FM
6	Diaphragm M25
6a	Spring TMOL10G
7	Valve body TCOR25FLG
8	Seal TRON80x53x5
9	Lock nut TGBA25
10	Conical seal G CON25
11	Retaining ring OG25
12	Compression nut TDAL25

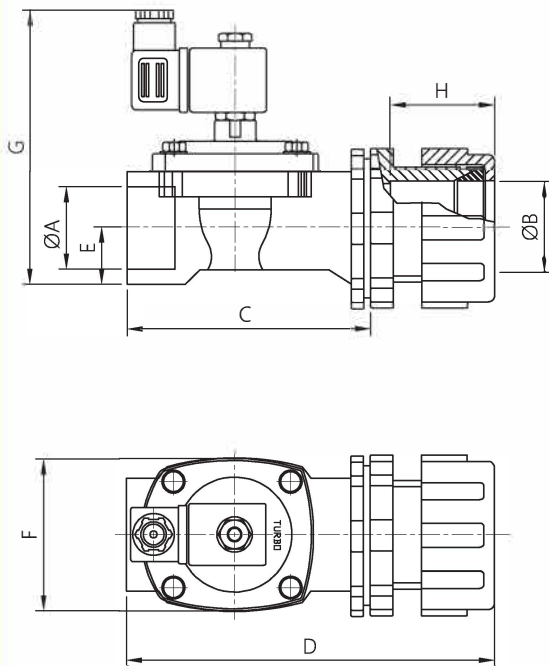
FDP version with built-in pilot
FDM version with remote pilot



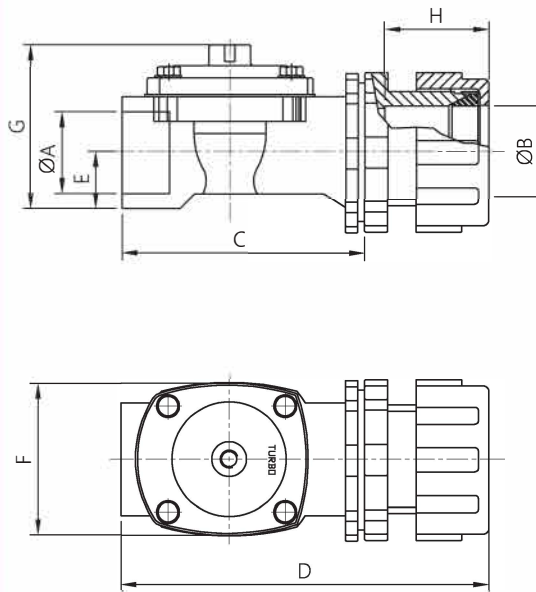
FD SERIES - Ø 1" - OVERALL DIMENSIONS

FDP/FDM OUTLET WITH QUICK CONNECTION

FDP 25



FDM 25



PULSE VALVES STRAIGHT THROUGH

MODEL	Ø A	Ø B	Ø C	Ø D	Ø E	F	G	M	Weight (kg)
FDP25	1 ¼"	1"	114	172	27	74	132	49.5	1.2
FDM25	1 ¼"	1"	114	172	27	74	74	49.5	1



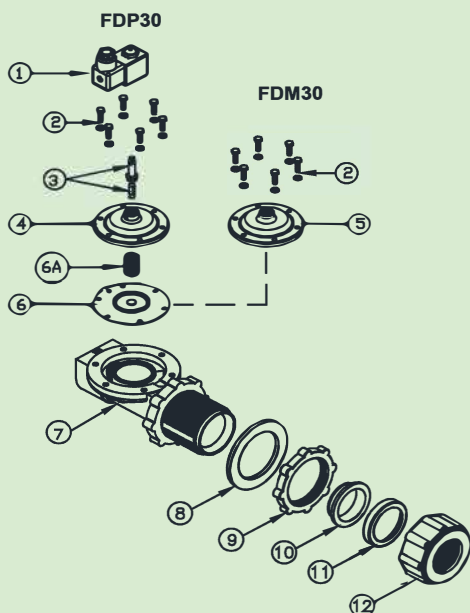
STRAIGHT THROUGH VALVES - FD SERIES - Ø 1 1/2"

Patented



FEATURES

Fluids	Non-lubricated filtered air
Operating temperature	Nitrile diaphragm -20°C; +80°C Viton diaphragm -20°C; +200°C
Operating pressure	Between 0.5 and 7.5 bar
Body and cover	Die-cast aluminium
Pilot unit	Stainless steel
Screws and bolts	Stainless steel
Coil insulation	Class H
Connector	PG 9 EN175301-803
Connector + coil protection	IP65 EN60529
Standard voltage	24V/50-60Hz (±10%) 19VA 115V/50-60Hz (±10%) 19VA 230V/50-60Hz (±10%) 19VA 24VDC (± 10%) 18 Watt

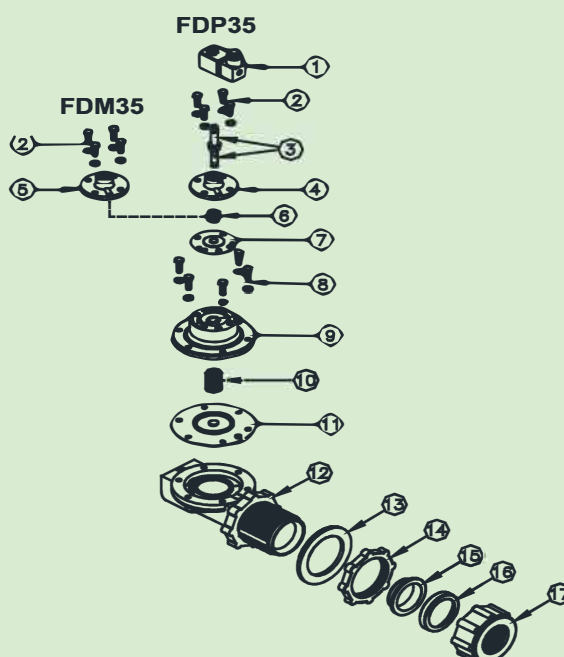


DESCRIPTION	FDM35/FDP35
1 Coil + Connector	BH10...V/50-60Hz
2 Screws + Washers	VTE6x18+TROND6GROWER
3 Pilot unit	GPC10
4 Cover	TCOP10
5 Remote cover	TCOP10FM
6 Spring	TMOL11G
7 Secondary diaphragm	M10
8 Screws + Washers	VTE6x20+TROND6GROWER
9 Cover	TCOP35N
10 Spring	TMOL25GHS
11 Primary diaphragm	M35
12 Valve body	TCOR35FLG
13 Seal	TRON100x70x5
14 Lock nut	TGBA40
15 Conical seal	G CON40
16 Retaining ring	OG40
17 Compression nut	TDAL40

FDP version with built-in pilot
FDM version with remote pilot

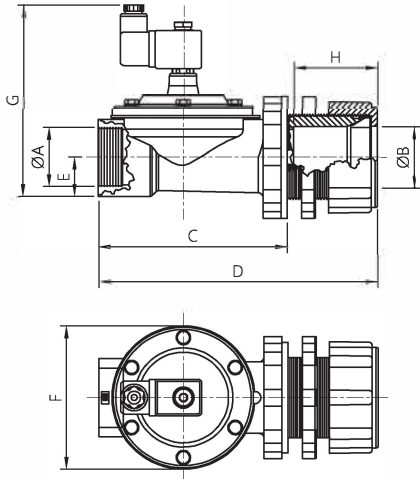
DESCRIPTION	FDM30/FDP30
1 Coil + Connector	BH10...V/50-60Hz
2 Screws + Washers	VTE6x20+TROND6GROWER
3 Pilot unit	GPC10
4 Cover	TCOP30
5 Remote cover	TCOP30FM
6 Diaphragm	M30
6a Spring	TMOL25GHS
7 Valve body	TCOR35FLG
8 Seal	TRON100x70x5
9 Lock nut	TGBA40
10 Conical seal	G CON40
11 Retaining ring	OG40
12 Compression nut	TDAL40

FDP version with built-in pilot
FDM version with remote pilot

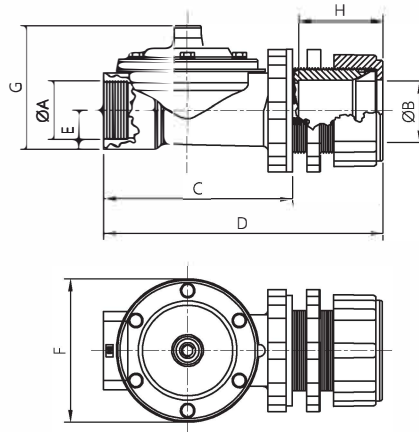


FD SERIES - Ø 1 ½" - OVERALL DIMENSIONS

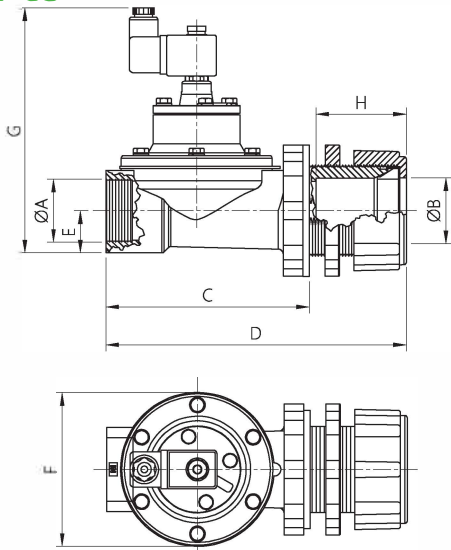
FDP 30



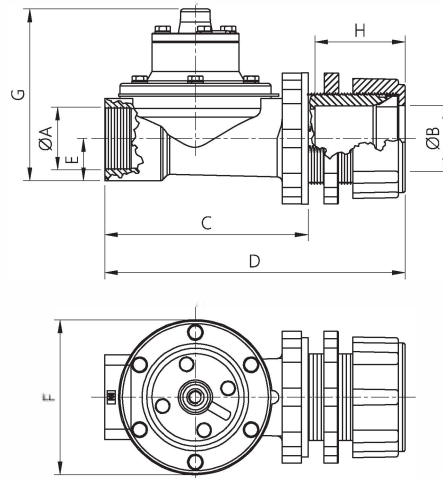
FDM 30



FDP 35



FDM 35



PULSE VALVES STRAIGHT THROUGH

MODEL	ØA	ØB	C	D	E	F	G	H	Weight (kg)
FDP30	2"	1 ½"	155	228	32	115	148	67.5	2.1
FDM30	2"	1 ½"	155	228	32	115	93	67.5	1.9
FDP35	2"	1 ½"	155	228	32	115	186	67.5	2.3
FDM35	2"	1 ½"	155	228	32	115	131	67.5	2.1

