

FLANGED VALVES - E SERIES - Ø 1" - 1 1/2"

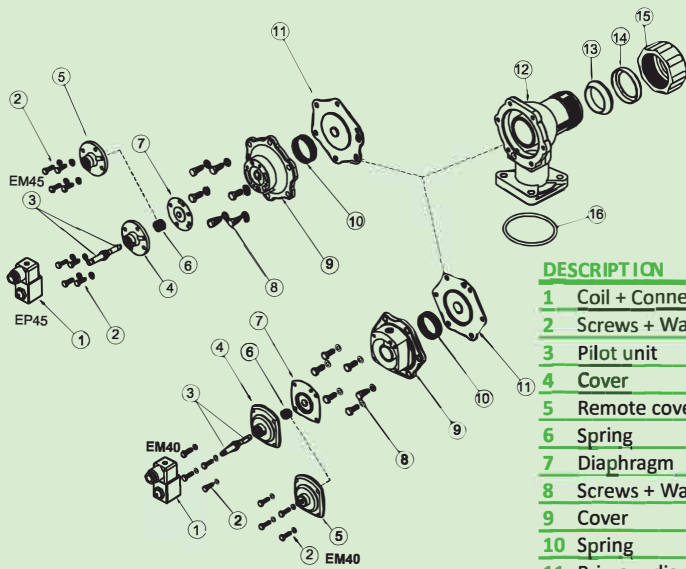
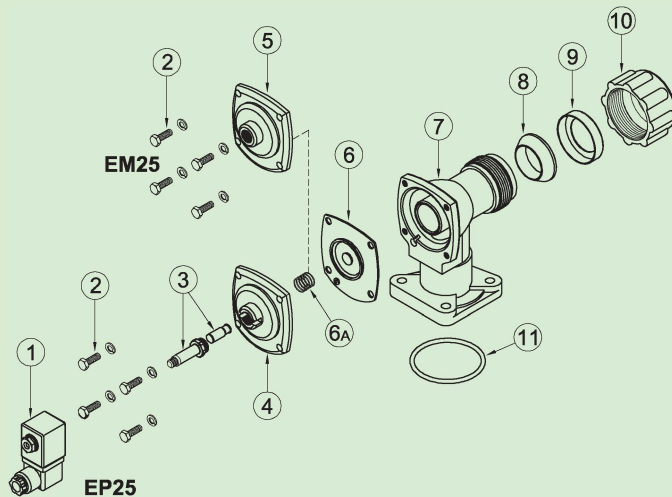


EP version with built-in pilot
EM version with remote pilot

FEATURES

Fluids	Non-lubricated filtered air
Operating temperature	Nitrile diaphragm -20°C; +80°C Viton diaphragm -20°C; +200°C
Operating pressure	Between 0.5 and 7.5 bar
Body and cover	Die-cast aluminium
Pilot unit	Stainless steel
Screws and bolts	Stainless steel
Coil insulation	Class H
Connector	PG 9 EN175301-803
Connector + coil protection	IP65 EN60529
Standard voltage	24V/50-60Hz (±10%) 19VA 115V/50-60Hz (±10%) 19VA 230V/50-60Hz (±10%) 19VA 24VDC (± 10%) 18 Watt

DESCRIPTION	EM25/EP25
1 Coil + Connector	BH10...V/50-60Hz
2 Screws + Washers	VTE6x20+TROND6GROWER
3 Pilot unit	GPC10
4 Cover	TCOP25/EM
5 Remote cover	TCOP25FM/EM
6 Diaphragm	M25/EM/EP
6a Spring	TMOL10G
7 Valve body	TCOR25FMG
8 Conical seal	GCON25
9 Retaining ring	OG25
10 Compression nut	TDAL25
11 O-ring	G OR55x6

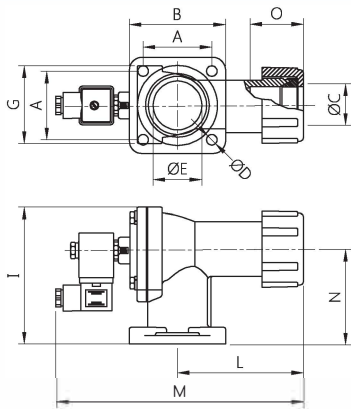


DESCRIPTION	EM40/EP40	EM45/EP45
1 Coil + Connector	BH10...V/50-60Hz	BH10...V/50-60Hz
2 Screws + Washers	VTE6x20+TROND6GROWER	VTE6x18+TROND6GROWER
3 Pilot unit	GPC10	GPC10
4 Cover	TCOP25	TCOP10
5 Remote cover	TCOP25FM	TCOP10FM
6 Spring	TMOL10G	TMOL11G
7 Diaphragm	M25	M10
8 Screws + Washers	VTE8x20+TROND8GROWER	VTE8x20+TROND8GROWER
9 Cover	TCOP40N	TCOP45N
10 Spring	TMOL40	TMOL40
11 Primary diaphragm	M40	M45
12 Body	TCOR40FMG	TCOR40FMG
13 Conical seal	GCON40	GCON40
14 Retaining ring	OG40	OG40
15 Compression nut	TDAL40	TDAL40
16 O-ring	GOR64_3X5_7	GOR64_3X5_7

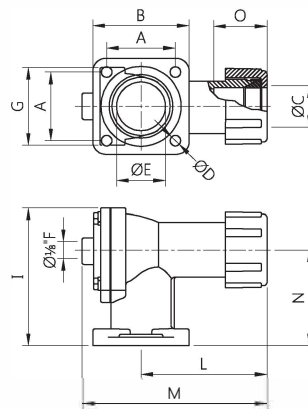
E SERIES - Ø 1" - 1 1/2" - OVERALL DIMENSIONS

PULSE VALVES FLANGED

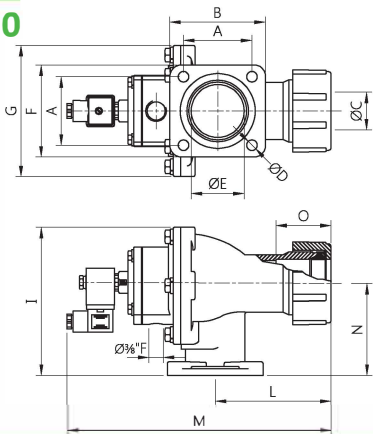
EP 25



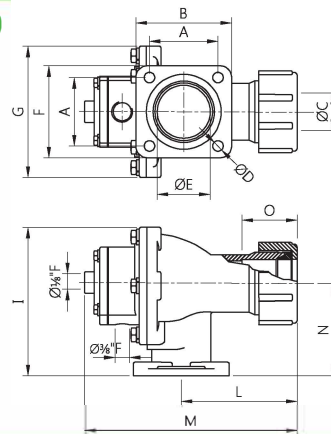
EM 25



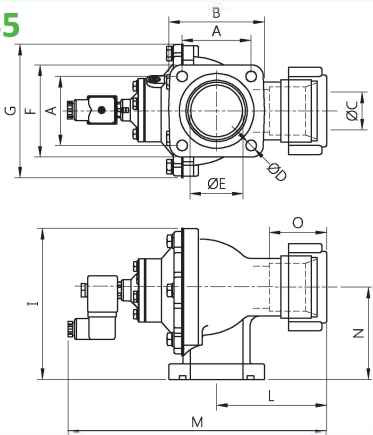
EP 40



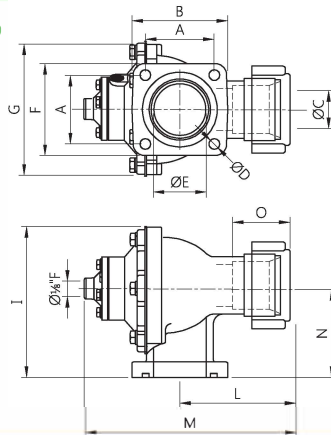
EM 40



EP 45



EM 45



MODEL	Ø L (nom)	A	B	Ø D	F	G	I	L	M	N	Ø E	Weight (kg)
EP 25	1"	60	82	9	82	74	119	106	217	81	1 1/2"	1
EP 40	1 1/2"	72	99	11	96	140	160	115	278	96	2"	2.3
EP 45	1 1/2"	72	99	11	96	140	160	115	270	96	2"	2.3
EM 25	1"	60	82	9	82	74	119	106	159	81	1 1/2"	0.9
EM 40	1 1/2"	72	99	11	96	140	160	115	220	96	2"	2.1
EM 45	1 1/2"	72	99	11	96	140	160	115	214	96	2"	2.1

