

FLANGED STRAIGHT THROUGH VALVES - EFD SERIES - Ø 1"

Patented

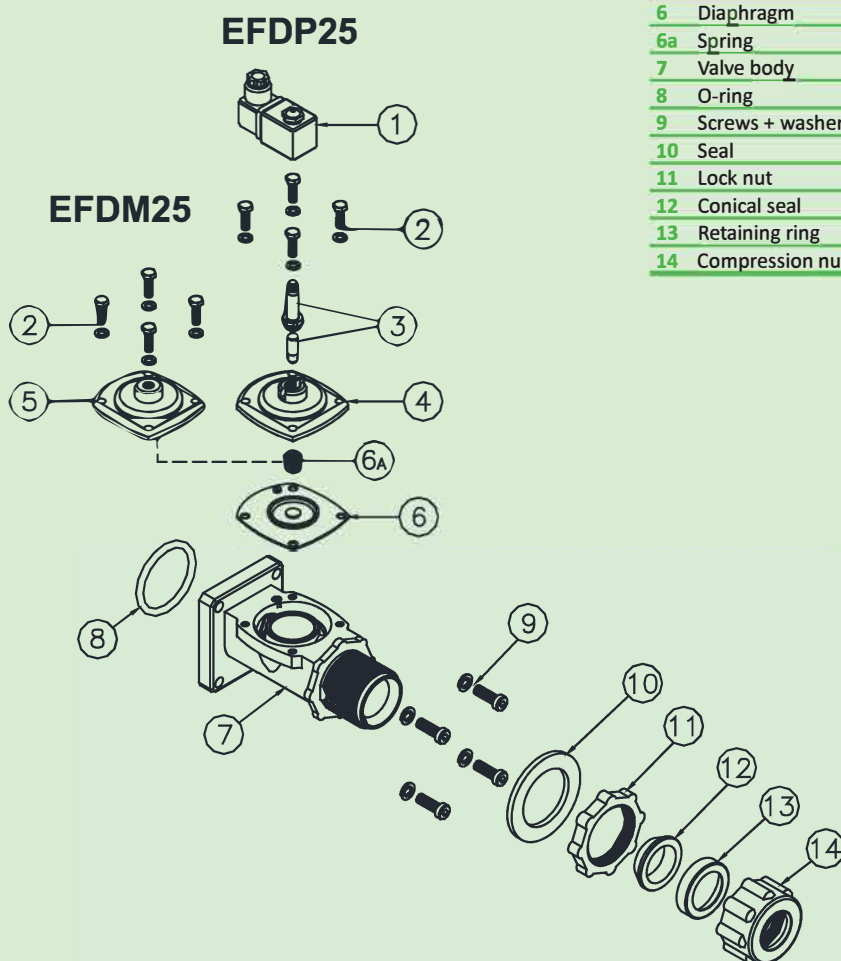


FEATURES

Fluids	Non-lubricated filtered air
Operating temperature	Nitrile diaphragm -20°C; +80°C Viton diaphragm -20°C; +200°C
Operating pressure	Between 0.5 and 7.5 bar
Body and cover	Die-cast aluminium
Pilot unit	Stainless steel
Screws and bolts	Stainless steel
Coil insulation	Class H
Connector	PG 9 EN175301-803
Connector + coil protection	IP65 EN60529
Standard voltage	24V/50-60Hz (±10%) 19VA 115V/50-60Hz (±10%) 19VA 230V/50-60Hz (±10%) 19VA 24VDC (± 10%) 18 Watt

DESCRIPTION

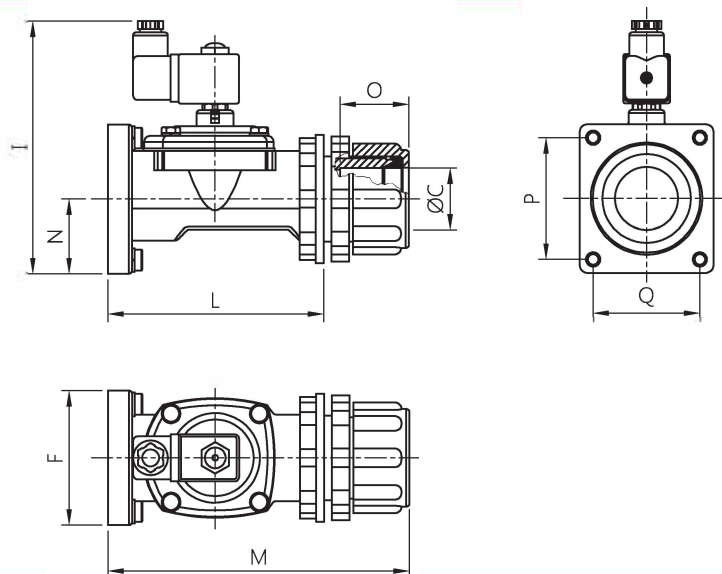
	EFDM25/EFDP25
1	Coil + Connector BH10...V/50-60Hz
2	Screws + Washers VTE6x20+TROND6GROWER
3	Pilot unit GPC10
4	Cover TCOP25
5	Remote cover TCOP25FM
6	Diaphragm M25
6a	Spring TMOL10G
7	Valve body TCOR25ELG
8	O-ring G OR55X6
9	Screws + washers VTCE18X25+TROND8GROWER
10	Seal TRON80X53X5
11	Lock nut TGBA25
12	Conical seal G CON25
13	Retaining ring OG25
14	Compression nut TDAL25



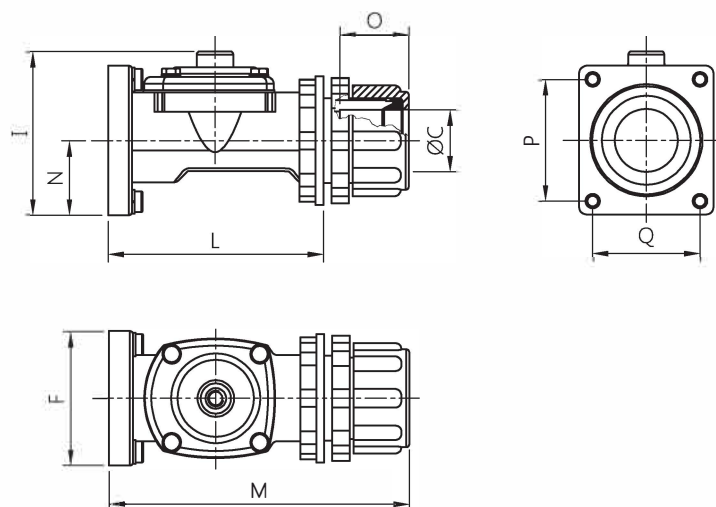
EFD SERIES - Ø 1" - OVERALL DIMENSIONS

PULSE VALVES
FLANGED STRAIGHT THROUGH

EFDP 25



EFDM 25



MODEL	Ø C	L	M	N	F	I	O	P	Q
EFDP25	1"	140	189	27	84	158	49.5	76	67
EFDM25	1"	140	189	27	84	102	49.5	76	67

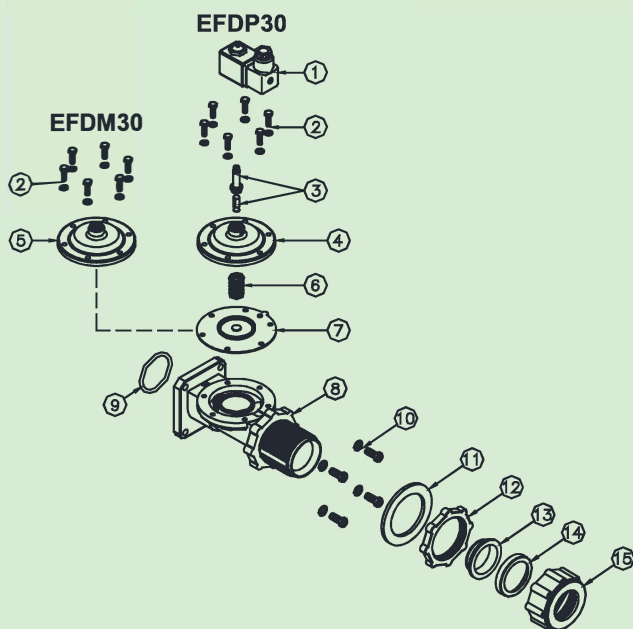


FLANGED STRAIGHT THROUGH VALVES - EFD SERIES - Ø 1 1/2"



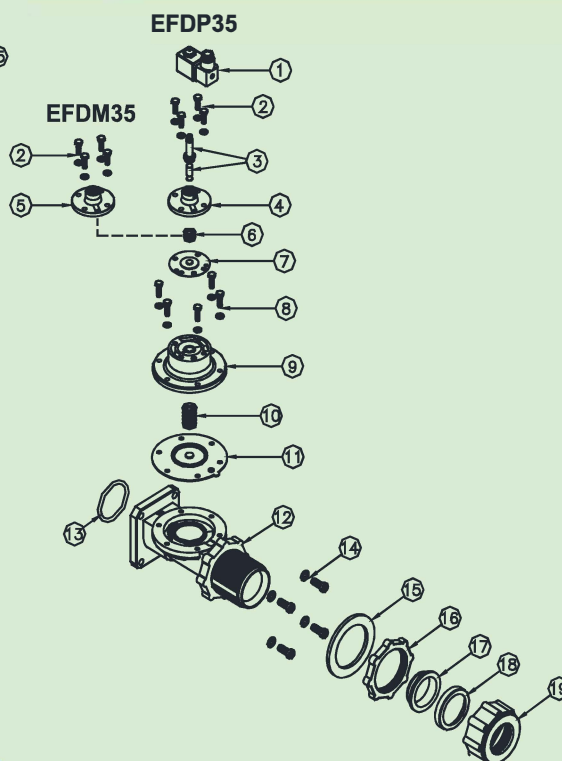
FEATURES

Fluids	Non-lubricated filtered air
Operating temperature	Nitrile diaphragm -20°C; +80°C Viton diaphragm -20°C; +200°C
Operating pressure	Between 0.5 and 7.5 bar
Body and cover	Die-cast aluminium
Pilot unit	Stainless steel
Screws and bolts	Stainless steel
Coil insulation	Class H
Connector	PG 9 EN175301-803
Connector + coil protection	IP65 EN60529
Standard voltage	24V/50-60Hz (±10%) 19VA 115V/50-60Hz (±10%) 19VA 230V/50-60Hz (±10%) 19VA 24VDC (± 10%) 18 Watt



DESCRIPTION	EFD35/EFDP35
1 Coil + Connector	BH10...V/50-60Hz
2 Screws + Washers	VTE6x18+TROND6GROWER
3 Pilot unit	GPC10
4 Cover	TCOP10
5 Remote cover	TCOP10FM
6 Spring	TMOL11G
7 Diaphragm	M10
8 Screws + Washers	VTCE6X20+TROND6GROWER
9 Cover	TCOP35N
10 Spring	TMOL25GHS
11 Diaphragm	M35
12 Body	TCOR35ELG
13 O-ring	GOR64,3X5,7
14 Screws + Washers	VTCE10X25+TROND10GROWER
15 Seal	TRON100x70x5
16 Lock nut	TGBA40
17 Conical seal	G CON40
18 Retaining ring	OG40
19 Compression nut	TDAL40

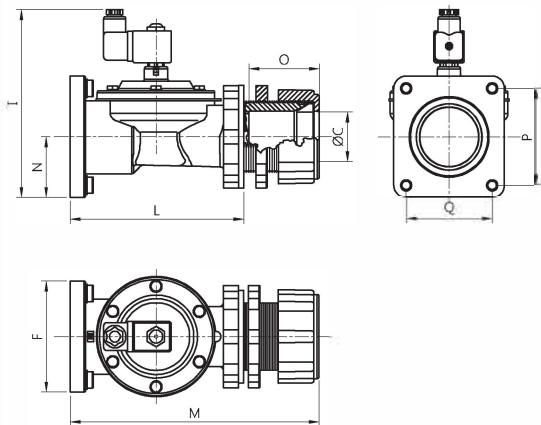
DESCRIPTION	FDM30/FDP30
1 Coil + Connector	BH10...V/50-60Hz
2 Screws + Washers	VTE6x18+TROND6GROWER
3 Pilot unit	GPC10
4 Cover	TCOP30
5 Remote cover	TCOP30FM
6 Spring	TMOL25GHS
7 Diaphragm	M30
8 Valve body	TCOR35ELG
9 O-ring	G OR64.3X5.7
10 Screws + Washers	VTCE10X25+TROND10GROWER
11 Seal	TRON100X70X5
12 Lock nut	TGBA40
13 Conical seal	GCON40
14 Retaining ring	OG40
15 Compression nut	TDAL40



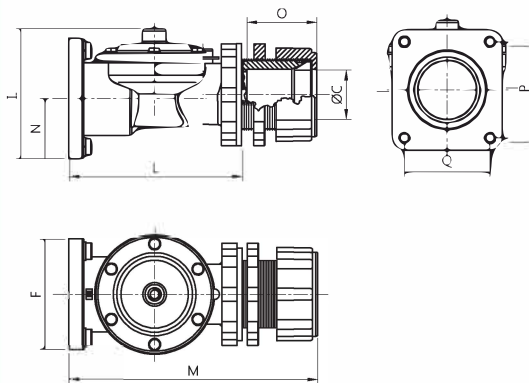
EFD SERIES - Ø 1 ½" - OVERALL DIMENSIONS

PULSE VALVES
FLANGED STRAIGHT THROUGH

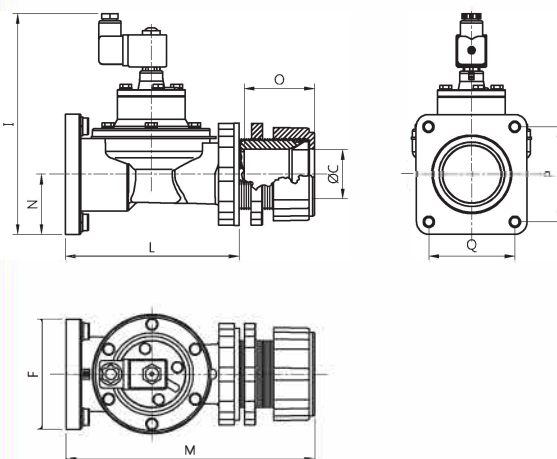
EFDP 30



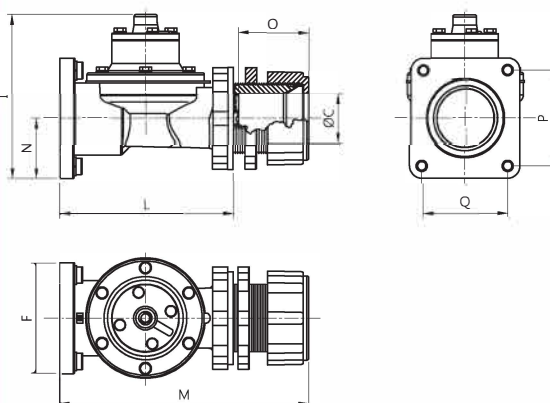
EFDM 30



EFDP 35



EFDM 35



MODEL	ØA	L	M	N	F	J	O	P	Q
EFDP30	1 ½"	175	244	60	108	183	69	94	84
EFDM30	1 ½"	175	244	60	108	127	69	94	84
EFDP35	1 ½"	175	244	60	108	216	69	94	84
EFDM35	1 ½"	175	244	60	108	160	69	94	84

