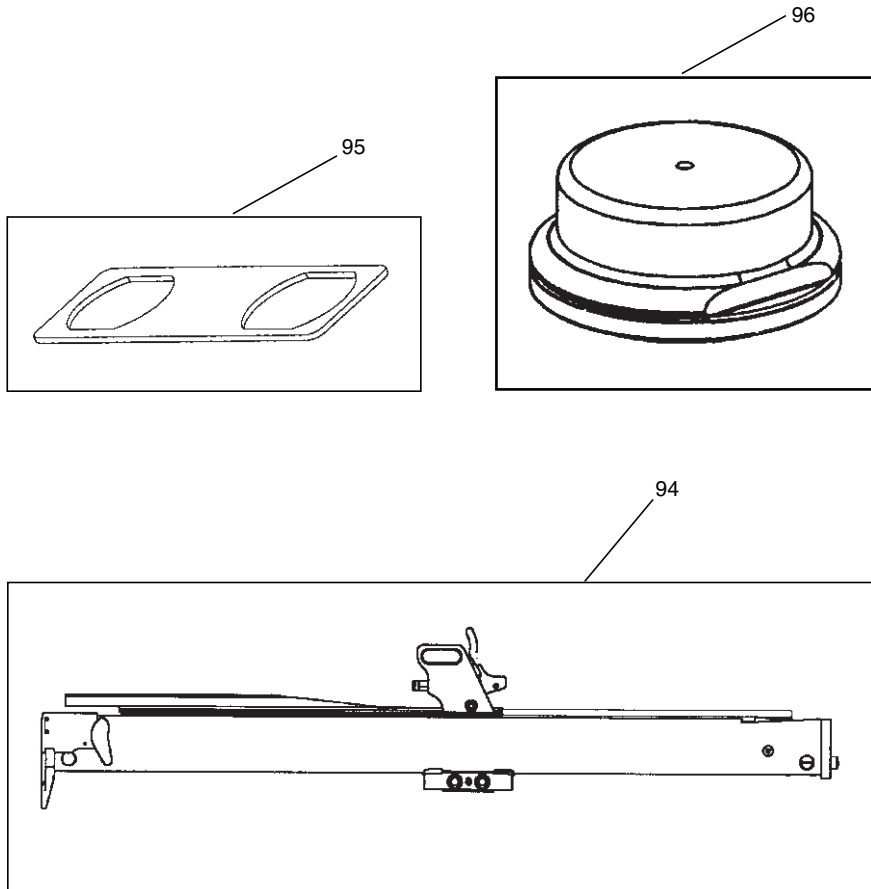


438S5

ACCESSORIES AVAILABLE / ACCESORIOS DISPONIBLES / ACCESSOIRES DISPONIBLES



BOSTITCH®

438S5

**PNEUMATIC STAPLER
ENGRAPADORA NEUMÁTICA
AGRAFEUSE PNEUMATIQUE**



**TOOL PARTS ILLUSTRATION
ILUSTRACIÓN DE LAS PIEZAS DE LA HERRAMIENTA
ILLUSTRATION DES PIÈCES D'OUTILLAGE**

⚠ WARNING:

⚠ ADVERTENCIA:

⚠ ATTENTION:

BEFORE PERFORMING REPAIRS ON THIS TOOL, ALL OPERATORS SHOULD STUDY THIS ILLUSTRATION, AS WELL AS THE PARTS LIST AND OPERATION AND MAINTENANCE MANUAL. OPERATORS SHOULD UNDERSTAND AND FOLLOW ALL SAFETY WARNINGS AND INSTRUCTIONS. KEEP THIS ILLUSTRATION WITH THE TOOL FOR FUTURE REFERENCE. IF YOU HAVE ANY QUESTIONS, CONTACT YOUR BOSTITCH REPRESENTATIVE DISTRIBUTOR.

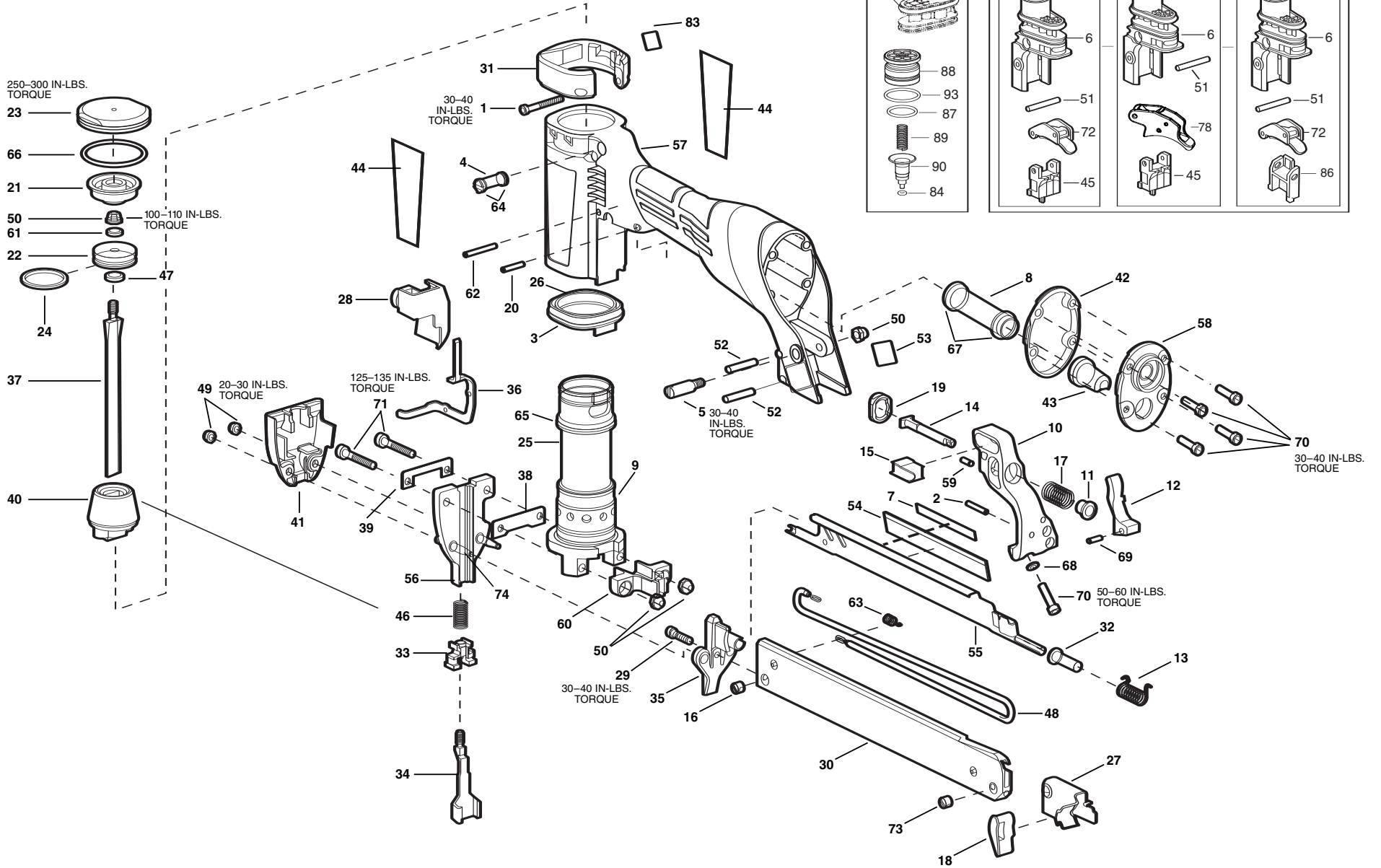
ANTES DE LLEVAR A CABO CUALQUIER REPARACIÓN EN LA HERRAMIENTA, TODOS LOS OPERARIOS DEBERÁN ESTUDIAR ESTA ILUSTRACIÓN, ASÍ COMO LA LISTA DE PIEZAS Y EL MANUAL DE OPERACIÓN Y MANTENIMIENTO. LOS OPERARIOS DEBERÁN ENTENDER Y SEGUIR TODAS LAS ADVERTENCIAS E INSTRUCCIONES DE SEGURIDAD. CONSERVE ESTA ILUSTRACIÓN CON LA HERRAMIENTA PARA PODER CONSULTARLA EN LO FUTURO. SI TUVIERA ALGUNA PREGUNTA, PÓNGASE EN CONTACTO CON SU REPRESENTANTE O DISTRIBUIDOR DE BOSTITCH.

AVANT DE PROCÉDER À LA RÉPARATION DE CET OUTIL, LES OPÉRATEURS DOIVENT ÉTUDIER LA PRÉSENTE ILLUSTRATION AINSI QUE LA LISTE DE PIÈCES ET LE MANUEL D'INSTRUCTIONS ET D'ENTRETIEN ; ILS DOIVENT ÉGALEMENT COMPRENDRE ET OBSERVER LES CONSIGNES DE SÉCURITÉ ET LES INSTRUCTIONS. CONSERVER CETTE ILLUSTRATION AVEC L'OUTIL POUR RÉFÉRENCE FUTURE. SI VOUS AVEZ DES QUESTIONS, COMMUNIQUEZ AVEC VOTRE REPRÉSENTANT OU VOTRE DISTRIBUTEUR DE BOSTITCH.

BOSTITCH®
STANLEY FASTENING SYSTEMS L.P.

438S5

PNEUMATIC STAPLER
ENGRAPADORA NEUMÁTICA
AGRAFEUSE PNEUMATIQUE



BOSTITCH

	438S5	Parts List:	IP1115-2REVV		
		To be Used with tool parts illustration:	IP1115-1REVK		
		and operation and maintenance manual:	104000		
		Serial Number on the Tool:	438S5 7157 000 and Higher		
ITEM	PART #	DESCRIPTION	ITEM	PART #	DESCRIPTION
1	100258	SCREW,SHCS,M4X0.7X35	54	158612	LABEL,WARNING
2	100263	PIN,SPIROL,M4X14MM	55	106148	COVER,MAGAZINE
3	100279	O-RING,1.612X.103	56	160201	NOSE,S5
4	101525	VALVE,ENERGY CONTROL	57	166984	FRAME
5	102168	SCREW,SPECIAL (MAGAZINE)	58	106292	CAP,END L/P
6	TVA12	KIT,STANDARD MODULE	59	106334	PIN,SPIRAL 4X10MM
7	103202	LABEL,MAGAZINE CAPACITY	60	106474	TOP GUIDE
8	103208	TUBE,EXHAUST	61	106691	WASHER,SPECIAL M6
9	103211	SEAL,CHECK	62	106871	PIN,SPRING 4X32MM
10	103217	BRACKET,MAGAZINE	63	106933	RETAINER,SPRING
11	103218	BUSHING,TOGGLE PIN	64	107129	O-RING,.268X.075
12	103447	TOGGLE,MAGAZINE	65	850607	O-RING,1.484X.139
13	103549	SPRING,COVER	66	850628	O-RING,1.734X.139
14	103558	LATCH,MAGAZINE	67	851554	O-RING,.703X.103
15	103601	SLEEVE,BRACKET	68	MLW5	WASHER,HSLW M5
16	103750	INSERT,THREADED M4X.7	69	MPG030012	PIN,SPRING,M3X12MM
17	103770	SPRING,COMPRESSION	70	MSC5080-20	SCREW,SOC HD. CAP M5 X 20
18	103791	HANDLE,PUSHER	71	MSC6100-35	SCREW,SHCS,M6X1.00X35
19	103795	DISC,LATCH STOP	72	CNTK2	KIT,CONTACT TRIP CONVERSION
20	103858	PIN,SPRING,4X20MM	73	T60024	PIN,SPECIAL(MAG NUT)
21	103993	BUMPER,TOP L/P	74	104069	PIN,NOSE
22	103994	PISTON	78	SEQ6	KIT,SEQUENTIAL
23	103995	CAP,SLEEVE L/P	83	110009	LABEL,POWER VALVE
24	166045	RING,PISTON	84	105996	O-RING,.087X.059
25	103997	SLEEVE,CYLINDER-L/P	86	106173	STOP,TRIGGER
26	103999	BULKHEAD,SLEEVE - L/P	87	102163	O-RING,.591X.059
27	104024	PUSHER (7/16IN)	88	167205	ASSEMBLY,HEAD VALVE
28	104027	COVER,TRIP L/P	89	101540	SPRING,COMPRESSION
29	104030	SCREW,SPECIAL M4X20	90	101533	SEAL,EXHAUST
30	104050	ASSEMBLY,MAGAZINE,7/16IN	91	101532	SEAL,HEAD VALVE
31	104064	PROTECTOR,FRONT FRAME L/P	92	102197	O-RING,1.174 X .103
32	104067	BUSHING,MAGAZINE COVER	93	102164	O-RING,.728X.059
33	104339	ADJUSTER,TRIP	94	108214	ASSY,400/500 SERIES S5 LM
34	104341	ARM,CONTACT	95	106427	WRENCH,SLEEVE CAP
35	107440	TIP,CORE (7/16")	96	112604	CAP,WEIGHT-L/P
36	104623	ARM,UPPER CONTACT			
37	104930	DRIVER,(7/16IN)			
38	104973	WEARPLATE (7/16IN)			
39	104975	PLATE,NOSE			
40	105007	BUMPER,LOWER L/P (1/2")			
41	105013	CASTING,NOSE COVER			
42	105057	GASKET,END CAP L/P			
43	105070	EXHAUST DEFLECTOR			
44	105797	LABEL			
45	105932	ARM GUIDE ASSEMBLY			
46	105934	SPRING,COMPRESSION			
47	105959	WASHER,PISTON			
48	106051	SPRING,EXTENSION			
49	MHE5080-100	NUT,NYLON M5X.80			
50	MHE6100-100	NUT,ESN M6X1			
51	106058	PIN,SPRING,M3X32			
52	106059	PIN,ROLL,M4X30MM			
53	106097	LABEL,PATENT			